

# TEST FOR STUDENT LEARNING



**Report Submitted To  
Gyan Shala (Ahmedabad)  
March 2011**

**By**



---

Dear Gyan Shala Team,

The mission of Gyan Shala is to ensure the quality of basic education to the children from poor rural and urban families is at par with what is available to high income or elite social groups. To reach this mission Gyan Shala is working in the slums of Ahmedabad with close to 8000 students by providing quality education at 1/4th the price of elite private schools or government schools.

The “Gyan Shala Program” is a joint initiative between the Government of Gujarat and Gyan Shala to improve quality of education in Municipal schools in Ahmedabad. For its initiatives in the Municipal schools of Ahmedabad, Gyan Shala is partnering with Educational Initiatives for understanding and assessing the quality of learning. The intervention covers classes 1 to 5. The assessment covers students from classes 3 and 5 in schools with medium of instruction in Gujarati. The project is currently in the third year.

The report enclosed is for the 3rd phase of Assessment conducted in March, 2011. The content page provides details of the report.

Thank you  
EI Team



	<b>CONTENTS</b>
	<b>IMPROVEMENT REPORTS</b>
	<b>FOR EACH TREATMENT AND CONTROL GROUP</b>
A1	WHAT WAS THE OVERALL PERFORMANCE ACHIEVED BY YOUR STUDENTS?
	<b>ALL GROUP PERFORMANCE</b>
C1	NUMBER OF STUDENTS TESTED AND QUALITY OF DATA
C2	YOUR STUDENTS VERSUS ASSET STUDENTS
C3	HOW DID YOUR STUDENTS PERFORM IN DIFFERENT SKILLS AND QUESTIONS THEY FOUND DIFFICULT/EASY
C4	HOW ARE YOUR STUDENTS' SCORES DISTRIBUTED?
C5	WHAT DID YOUR STUDENTS ANSWER?
C6	WHAT ARE THE SCORES OF THE SCHOOLS TESTED?



# Test For Student Learning For Gyan Shala Program

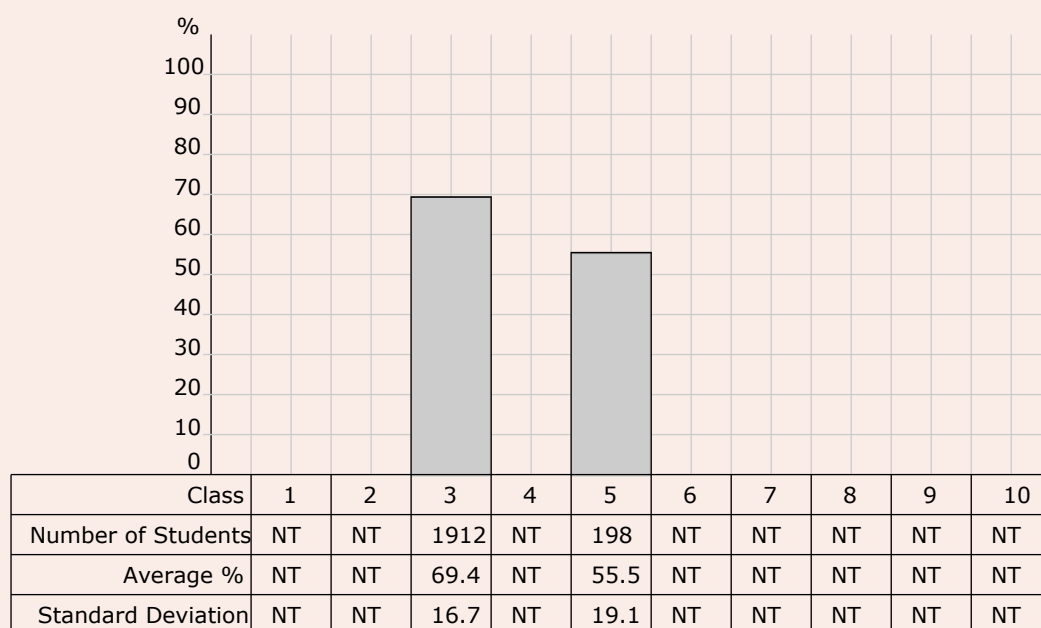
WHAT WAS THE OVERALL PERFORMANCE ACHIEVED BY YOUR STUDENTS?

Medium: Gujarati

Group : Gyan Shala Schools

Test : March 2011

Maths

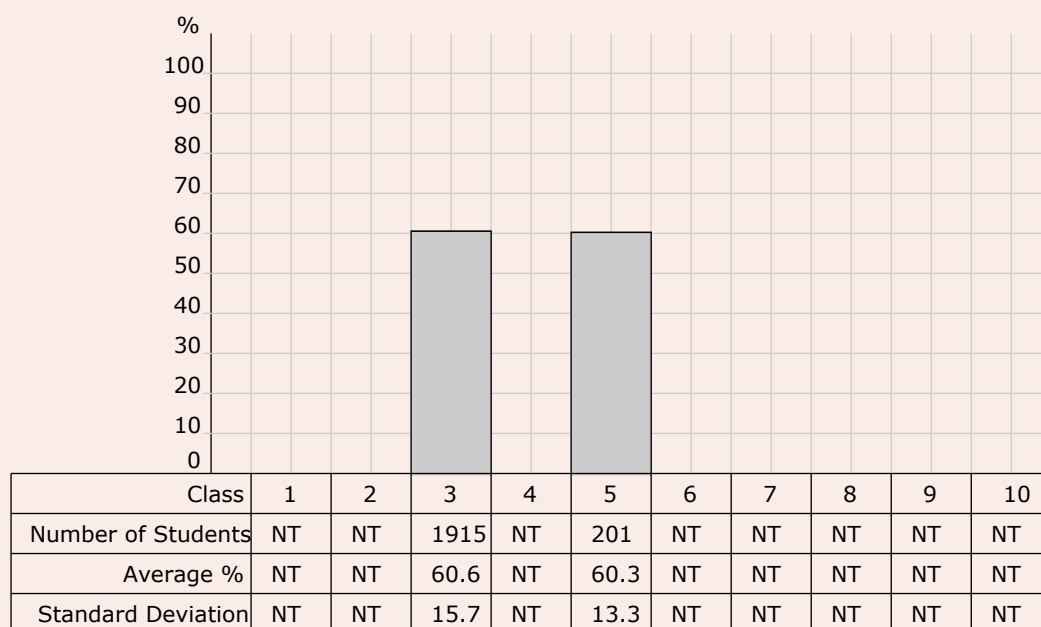


Medium: Gujarati

Group : Gyan Shala Schools

Test : March 2011

Language



\* The Average Performance is calculated from the number of correct responses given by students to the questions in the paper.

\* The Standard Deviation (SD) represents the variation in the performance on a the test expressed as a percentage.

\* A low SD implies that differences between the students is not very high.

\* NT - Class Not Tested

# Test For Student Learning For Gyan Shala Program

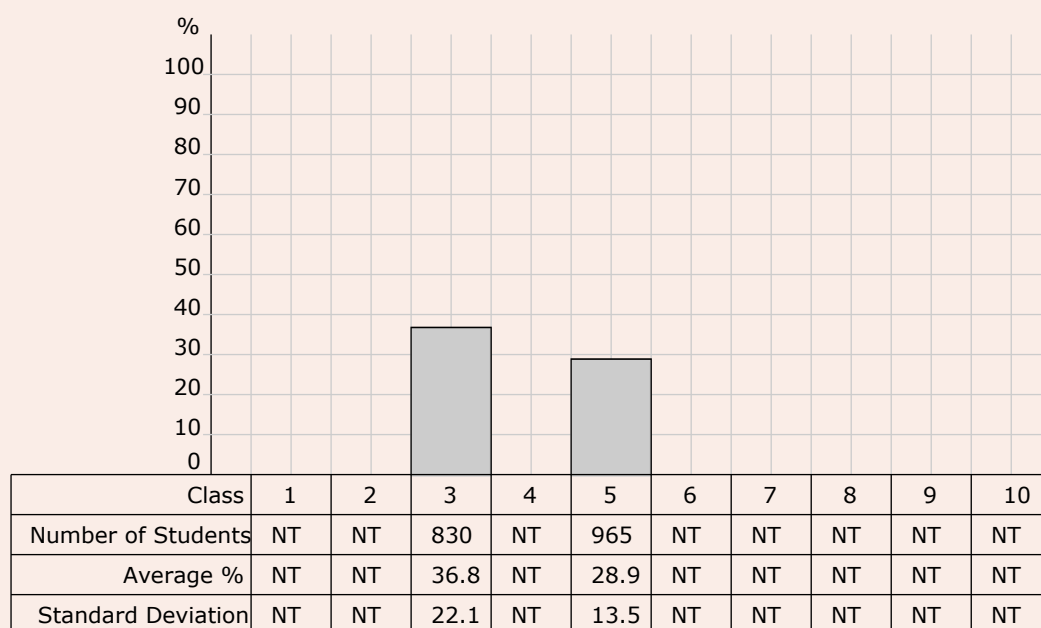
WHAT WAS THE OVERALL PERFORMANCE ACHIEVED BY YOUR STUDENTS?

Medium: Gujarati

Group : Treatment AMC Schools

Test : March 2011

Maths

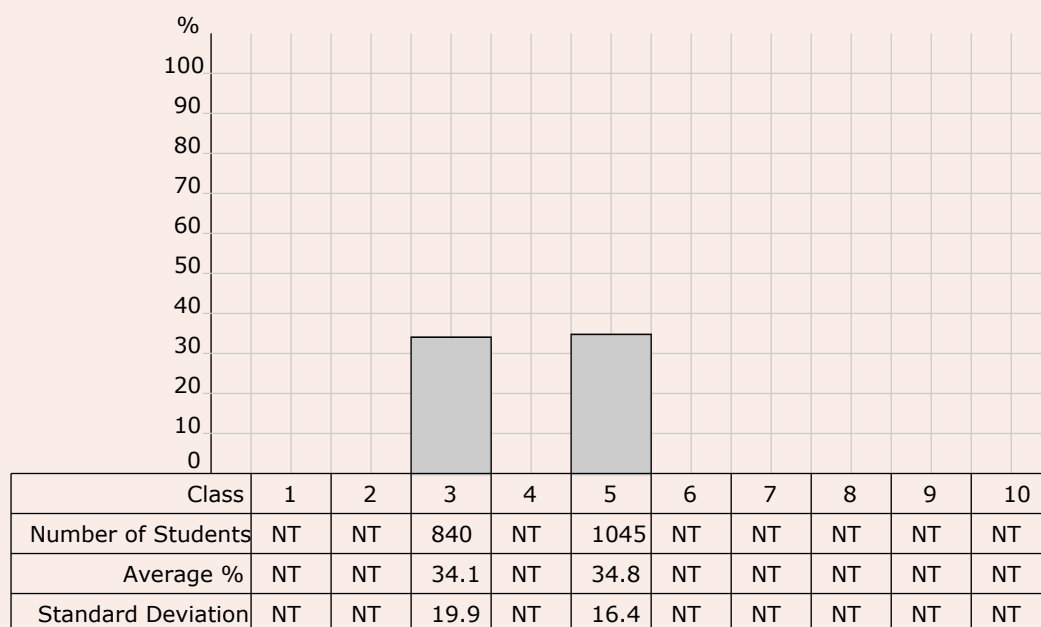


Medium: Gujarati

Group : Treatment AMC Schools

Test : March 2011

Language



\* The Average Performance is calculated from the number of correct responses given by students to the questions in the paper.

\* The Standard Deviation (SD) represents the variation in the performance on a the test expressed as a percentage.

\* A low SD implies that differences between the students is not very high.

\* NT - Class Not Tested

# Test For Student Learning For Gyan Shala Program

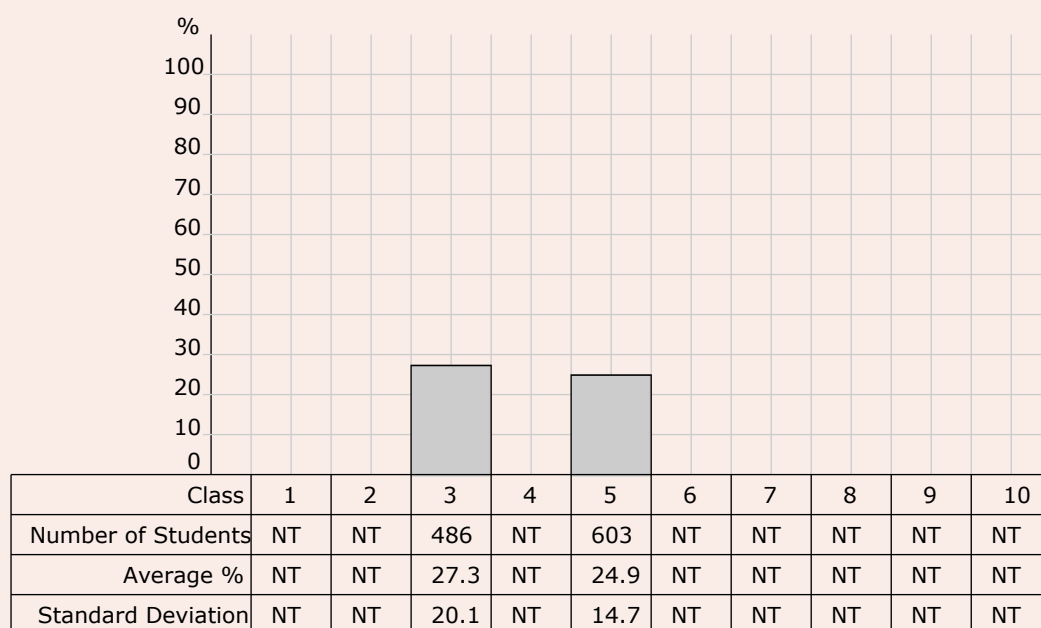
WHAT WAS THE OVERALL PERFORMANCE ACHIEVED BY YOUR STUDENTS?

Medium: Gujarati

Group : Control AMC Schools

Test : March 2011

Maths

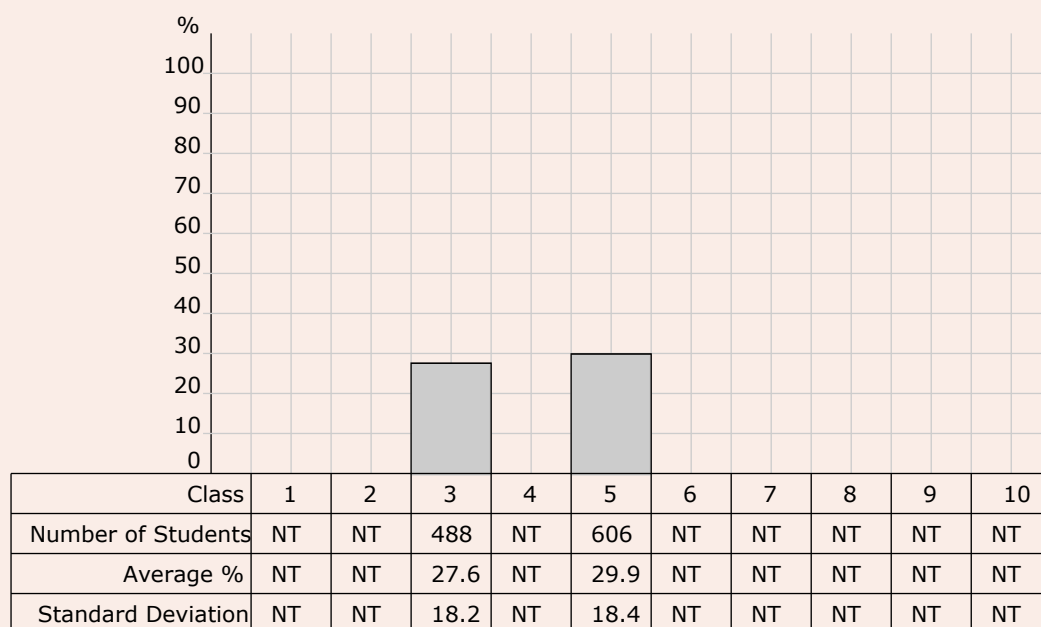


Medium: Gujarati

Group : Control AMC Schools

Test : March 2011

Language



\* The Average Performance is calculated from the number of correct responses given by students to the questions in the paper.

\* The Standard Deviation (SD) represents the variation in the performance on a the test expressed as a percentage.

\* A low SD implies that differences between the students is not very high.

\* NT - Class Not Tested

## Test For Student Learning For Gyan Shala Program

### NUMBER OF STUDENTS TESTED AND QUALITY OF DATA COLLECTED IN THIS TEST

Sample Size: 100% of Treatment Schools  
CONTROL GROUP TESTED: Yes

Percentage of Data Errors Prior to Data Cleaning :0.363  
Percentage of Data Errors After Data Cleaning :0.363

Subject	Medium	Class	Group	March 2011	March 2010	March 2009
Language	Gujarati	2	Gyan Shala Schools		536	593
Language	Gujarati	2	Treatment AMC Schools		1514	1136
Language	Gujarati	2	Control AMC Schools		420	690
Language	Gujarati	3	Gyan Shala Schools	1915	1575	1652
Language	Gujarati	3	Treatment AMC Schools	840	982	1348
Language	Gujarati	3	Control AMC Schools	488	502	698
Language	Gujarati	4	Gyan Shala Schools		239	248
Language	Gujarati	4	Treatment AMC Schools		1035	1758
Language	Gujarati	4	Control AMC Schools		527	1665
Language	Gujarati	5	Gyan Shala Schools	201		
Language	Gujarati	5	Treatment AMC Schools	1045		
Language	Gujarati	5	Control AMC Schools	606		
Maths	Gujarati	2	Gyan Shala Schools		536	593
Maths	Gujarati	2	Treatment AMC Schools		1514	1136
Maths	Gujarati	2	Control AMC Schools		420	690
Maths	Gujarati	3	Gyan Shala Schools	1912	1584	1653
Maths	Gujarati	3	Treatment AMC Schools	830	1006	1358
Maths	Gujarati	3	Control AMC Schools	486	525	694
Maths	Gujarati	4	Gyan Shala Schools		238	242
Maths	Gujarati	4	Treatment AMC Schools		1026	1707
Maths	Gujarati	4	Control AMC Schools		503	1612
Maths	Gujarati	5	Gyan Shala Schools	198		
Maths	Gujarati	5	Treatment AMC Schools	965		
Maths	Gujarati	5	Control AMC Schools	603		
EVS	Gujarati	2	Gyan Shala Schools			
EVS	Gujarati	2	Treatment AMC Schools			
EVS	Gujarati	2	Control AMC Schools			
EVS	Gujarati	3	Gyan Shala Schools			
EVS	Gujarati	3	Treatment AMC Schools			
EVS	Gujarati	3	Control AMC Schools			
EVS	Gujarati	4	Gyan Shala Schools		240	242
EVS	Gujarati	4	Treatment AMC Schools		1020	1716
EVS	Gujarati	4	Control AMC Schools		505	1596
EVS	Gujarati	5	Gyan Shala Schools			
EVS	Gujarati	5	Treatment AMC Schools			
EVS	Gujarati	5	Control AMC Schools			

\* Control refers to students who were from similar schools that did not participate in the program.

\* Number of students is specified for the last 4 rounds, if tested.



# Test For Student Learning For Gyan Shala Program

## BIRD'S EYE VIEW

### YOUR STUDENTS VERSUS ASSET STUDENTS

Medium: Gujarati

Group: Gyan Shala Schools

Test : March 2011

Language

Class	Number of Questions	Your Students			ASSET Students			Difference from ASSET (AVG Scaled S)
		AVG Scores	SD	AVG Scaled S	AVG Scores	SD	AVG Scaled S	
1		NT						
2		NT						
3	16	48.2	19.9	480.0	53.0	15.2	500.0	Very Close
4		NT						
5	18	58.5	15.4	490.0	61.2	16.6	500.0	Very Close
6		NT						
7		NT						
8		NT						
9		NT						
10		NT						

Medium: Gujarati

Group: Gyan Shala Schools

Test : March 2011

Maths

Class	Number of Questions	Your Students			ASSET Students			Difference from ASSET (AVG Scaled S)
		AVG Scores	SD	AVG Scaled S	AVG Scores	SD	AVG Scaled S	
1		NT						
2		NT						
3	9	62.9	23.3	530.0	53.1	15.6	490.0	Very Close
4		NT						
5	11	50.1	21.7	500.0	50.4	15.9	500.0	Very Close
6		NT						
7		NT						
8		NT						
9		NT						
10		NT						

\* The Average Performance (AVG) is expressed as a percentage of correct responses given by students to the ASSET questions in the paper.

\* The Standard Deviation (SD) represents the variation in the performance on the ASSET questions expressed as a percentage.

\* The AVG Scaled Scores (AVG Scaled S in the above table) is the average of norm-referenced scores that measure your students and ASSET students performance on the same statistical scale.

\* ASSET is a diagnostic achievement test taken by English Medium Private Schools in India.

\* 'Difference from ASSET' is a band of descriptors that check how different is the performance of your students compared to that of ASSET students.

\* The cells are color coded to indicate how to interpret the values shown - as 'very close' to ASSET performance, 'close', 'far' and 'very far' from ASSET.

0-50	51-100	101-150	151 & above
Very Close	Close	Far	Very Far



# Test For Student Learning For Gyan Shala Program

## BIRD'S EYE VIEW

### YOUR STUDENTS VERSUS ASSET STUDENTS

Medium: Gujarati

Group: Treatment AMC Schools

Test : March 2011

Language

Class	Number of Questions	Your Students			ASSET Students			Difference from ASSET (AVG Scaled S)
		AVG Scores	SD	AVG Scaled S	AVG Scores	SD	AVG Scaled S	
1		NT						
2		NT						
3	16	24.3	19.6	400.0	53.0	15.2	510.0	Far
4		NT						
5	18	33.1	17.9	450.0	61.2	16.6	580.0	Far
6		NT						
7		NT						
8		NT						
9		NT						
10		NT						

Medium: Gujarati

Group: Treatment AMC Schools

Test : March 2011

Maths

Class	Number of Questions	Your Students			ASSET Students			Difference from ASSET (AVG Scaled S)
		AVG Scores	SD	AVG Scaled S	AVG Scores	SD	AVG Scaled S	
1		NT						
2		NT						
3	9	28.5	23.1	410.0	53.1	15.6	510.0	Close
4		NT						
5	11	20.7	14.3	380.0	50.4	15.9	510.0	Far
6		NT						
7		NT						
8		NT						
9		NT						
10		NT						

\* The Average Performance (AVG) is expressed as a percentage of correct responses given by students to the ASSET questions in the paper.

\* The Standard Deviation (SD) represents the variation in the performance on the ASSET questions expressed as a percentage.

\* The AVG Scaled Scores (AVG Scaled S in the above table) is the average of norm-referenced scores that measure your students and ASSET students performance on the same statistical scale.

\* ASSET is a diagnostic achievement test taken by English Medium Private Schools in India.

\* 'Difference from ASSET' is a band of descriptors that check how different is the performance of your students compared to that of ASSET students.

\* The cells are color coded to indicate how to interpret the values shown - as 'very close' to ASSET performance, 'close', 'far' and 'very far' from ASSET.

0-50	51-100	101-150	151 & above
Very Close	Close	Far	Very Far

# Test For Student Learning For Gyan Shala Program

HOW DID YOUR STUDENTS' PERFORM IN DIFFERENT SKILLS AND QUESTIONS THEY FOUND DIFFICULT/EASY

Medium: Gujarati

Group: Gyan Shala Schools

Language **3**

Test : March 2011

Number of Students: 1915

Average Score: 60.6

SD: 15.7

S.No	Skill Name	Questions	Average	SD	Difference % (- 0 +)
1	Recognises and writes letters, knows alphabetical sequence and sound	1, 2, 3	76.7%	17.0%	
2	Reads and writes small and moderately difficult words and knows names of objects, birds, animals, etc seen in daily life	4, 5, 6, 7, 10	74.0%	20.1%	
3	Uses words appropriate to the context based on their meanings, number and gender	8, 9, 11, 12, 13, 14	70.7%	23.0%	
4	Reads and writes 3 simple and short sentences that have less than 5 words in a sentence	15, 16, 17	72.8%	26.7%	
5	Reads descriptive text, of 3-5 sentences independently and comprehends beyond stated facts	18, 19, 20, 21, 22, 23, 27, 28, 29, 30, 31, 32	50.1%	23.5%	
6	Understands written information presented in various forms as Tables, Notices, Tickets, Posters, Labels, etc seen in real life	24, 25, 26	31.9%	25.3%	

\* The Average Performance is calculated from the number of correct responses given by students to the questions constituting specific skills.

\* The Standard Deviation (SD) represents the variation in the performance on a particular skill expressed as a percentage.

\* A low SD implies that differences between the students is not very high.

\* Difference is change in skill scores over previous test.

## SOME INTERESTING ANALYSIS

\* ASSET Questions which students in your program found MOST DIFFICULT

Qno	% of Your Students Who Answered Correctly	% of ASSET Students Who Answered Correctly	Graph 0 % 100
26	19.1%	44.2%	Your Students
			Asset Students
20	23.5%	47.4%	Your Students
			Asset Students
3	33.4%	46.7%	Your Students
			Asset Students

\* ASSET is a diagnostic achievement test taken by English Medium Private Schools in India.

\* Questions which students in your program found MOST DIFFICULT/EASY

Qno	% of Your Students Who Answered Correctly	DIFFICULT/EASY
26	19.1%	DIFFICULT
20	23.5%	DIFFICULT
22	25.6%	DIFFICULT
1	99.1%	EASY
2	97.5%	EASY
5	95.9%	EASY

Here are the 2 STRONGEST and 2 WEAKEST skills of your students for the above subject and class:

**STRONG SKILLS:**

Skill 1: Recognises and writes letters, knows alphabetical sequence and sound

Skill 2: Reads and writes small and moderately difficult words and knows names of objects, birds, animals, etc seen in daily life

**WEAK SKILLS:**

Skill 6: Understands written information presented in various forms as Tables, Notices, Tickets, Posters, Labels, etc seen in real life

Skill 5: Reads descriptive text, of 3-5 sentences independently and comprehends beyond stated facts

# Test For Student Learning For Gyan Shala Program

HOW DID YOUR STUDENTS' PERFORM IN DIFFERENT SKILLS AND QUESTIONS THEY FOUND DIFFICULT/EASY

Medium: Gujarati

Group: Gyan Shala Schools

Maths **3**

Test : March 2011

Number of Students: 1912

Average Score: 69.4

SD: 16.7

S.No	Skill Name	Questions	Average	SD	Difference % (- 0 +)
1	Pre-maths skills	1, 3, 8, 21	79.9%	21.7%	
2	Number sense	2, 4, 9, 10, 12, 24	77.3%	22.0%	
3	Four basic Arithmetic operations	5, 7, 13, 15, 17, 20	68.4%	22.4%	
4	Applications in daily life	14, 18, 22, 23, 25, 26	61.9%	28.0%	
5	Geometry: Basic Shapes	6, 11, 16, 19	60.1%	20.6%	

\* The Average Performance is calculated from the number of correct responses given by students to the questions constituting specific skills.

\* The Standard Deviation (SD) represents the variation in the performance on a particular skill expressed as a percentage.

\* A low SD implies that differences between the students is not very high.

\* Difference is change in skill scores over previous test.

## SOME INTERESTING ANALYSIS

\* ASSET Questions which students in your program found MOST DIFFICULT

Qno	% of Your Students Who Answered Correctly	% of ASSET Students Who Answered Correctly	Graph 0 % 100
17	25.4%	34.1%	<div> <div></div> <div></div> </div>
	NA	NA	<div> <div></div> <div></div> </div>
	NA	NA	<div> <div></div> <div></div> </div>

\* ASSET is a diagnostic achievement test taken by English Medium Private Schools in India.

\* Questions which students in your program found MOST DIFFICULT/EASY

Qno	% of Your Students Who Answered Correctly	DIFFICULT/EASY
16	16.0%	DIFFICULT
17	25.4%	DIFFICULT
25	47.2%	DIFFICULT
8	92.8%	EASY
5	91.0%	EASY
6	87.8%	EASY

Here are the 2 STRONGEST and 2 WEAKEST skills of your students for the above subject and class:

**STRONG SKILLS:**

Skill 1: Pre-maths skills

Skill 2: Number sense

**WEAK SKILLS:**

Skill 5: Geometry: Basic Shapes

Skill 4: Applications in daily life

# Test For Student Learning For Gyan Shala Program

HOW DID YOUR STUDENTS' PERFORM IN DIFFERENT SKILLS AND QUESTIONS THEY FOUND DIFFICULT/EASY

Medium: Gujarati

Group: Gyan Shala Schools

Language **5**

Test : March 2011

Number of Students: 201

Average Score: 60.3

SD: 13.3

S.No	Skill Name	Questions	Average	SD	Difference % (- 0 +)
1	Reads and writes moderately difficult, long words and knows a wide range of names of objects, birds, animals, feelings	1, 2, 3, 4, 5	75.7%	16.3%	
2	Uses words appropriate to the context based on their meaning, gender, time and description	6, 7, 8, 9, 10, 11, 12, 13	70.6%	19.0%	
3	Reads, constructs and punctuates 3 simple sentences that have 5-7 words in a sentence	14, 15, 16	59.0%	31.1%	
4	Reads descriptive text, of 8-10 sentences independently and comprehends beyond stated facts	17, 18, 19, 20, 21, 22, 23, 24, 25, 26, 27, 28, 29, 30, 31, 32	51.6%	17.6%	
5	Understands written information presented in various forms as Tables, Notices, Tickets, Posters, Labels, etc seen in real life	33, 34, 35, 36, 37	54.0%	24.8%	
6	Expresses ideas coherently on a given topic by filling words in a passage/story/dialogue	38	74.4%	31.1%	

\* The Average Performance is calculated from the number of correct responses given by students to the questions constituting specific skills.

\* The Standard Deviation (SD) represents the variation in the performance on a particular skill expressed as a percentage.

\* A low SD implies that differences between the students is not very high.

\* Difference is change in skill scores over previous test.

## SOME INTERESTING ANALYSIS

\* ASSET Questions which students in your program found MOST DIFFICULT

Qno	% of Your Students Who Answered Correctly	% of ASSET Students Who Answered Correctly	Graph 0 % 100
3	27.4%	36.7%	Your Students
			Asset Students
32	36.3%	47.0%	Your Students
			Asset Students
19	46.3%	69.1%	Your Students
			Asset Students

\* ASSET is a diagnostic achievement test taken by English Medium Private Schools in India.

\* Questions which students in your program found MOST DIFFICULT/EASY

Qno	% of Your Students Who Answered Correctly	DIFFICULT/EASY
29	25.4%	DIFFICULT
3	27.4%	DIFFICULT
26	29.4%	DIFFICULT
5	97.0%	EASY
4	96.5%	EASY
1	92.5%	EASY

Here are the 2 STRONGEST and 2 WEAKEST skills of your students for the above subject and class:

**STRONG SKILLS:**

Skill 1: Reads and writes moderately difficult, long words and knows a wide range of names of objects, birds, animals, feelings

Skill 6: Expresses ideas coherently on a given topic by filling words in a passage/story/dialogue

**WEAK SKILLS:**

Skill 4: Reads descriptive text, of 8-10 sentences independently and comprehends beyond stated facts

Skill 5: Understands written information presented in various forms as Tables, Notices, Tickets, Posters, Labels, etc seen in real life

# Test For Student Learning For Gyan Shala Program

HOW DID YOUR STUDENTS' PERFORM IN DIFFERENT SKILLS AND QUESTIONS THEY FOUND DIFFICULT/EASY

Medium: Gujarati

Group: Gyan Shala Schools

Maths **5**

Test : March 2011

Number of Students: 198

Average Score: 55.5

SD: 19.1

S.No	Skill Name	Questions	Average	SD	Difference % (- 0 +)
1	Number sense	1, 2, 6, 22	67.7%	24.8%	
2	Four basic Arithmetic operations	12, 14, 15, 20, 24, 30	55.8%	26.1%	
3	Measurement and its applications	7, 9, 13, 16, 28	47.6%	29.3%	
4	Area and Perimeter, Volume and Surface Area	5, 21	64.6%	33.5%	
5	Fractions, Decimals Ratios and Percentages	11, 17, 29	42.9%	26.4%	
6	Data interpretation and analysis	26, 27, 31	56.2%	32.0%	
7	Applications in daily life	3, 8, 19, 25	55.1%	27.2%	
8	Geometry: Basic Shapes	4, 10, 18, 23	57.2%	27.8%	

\* The Average Performance is calculated from the number of correct responses given by students to the questions constituting specific skills.

\* The Standard Deviation (SD) represents the variation in the performance on a particular skill expressed as a percentage.

\* A low SD implies that differences between the students is not very high.

\* Difference is change in skill scores over previous test.

## SOME INTERESTING ANALYSIS

\* ASSET Questions which students in your program found MOST DIFFICULT

Qno	% of Your Students Who Answered Correctly	% of ASSET Students Who Answered Correctly	Graph 0 % 100
19	33.3%	40.2%	Your Students
			Asset Students
31	35.9%	66.0%	Your Students
			Asset Students
23	41.4%	62.2%	Your Students
			Asset Students

\* ASSET is a diagnostic achievement test taken by English Medium Private Schools in India.

\* Questions which students in your program found MOST DIFFICULT/EASY

Qno	% of Your Students Who Answered Correctly	DIFFICULT/EASY
11	18.2%	DIFFICULT
28	20.2%	DIFFICULT
19	33.3%	DIFFICULT
2	90.9%	EASY
5	85.9%	EASY
12	82.8%	EASY

Here are the 2 STRONGEST and 2 WEAKEST skills of your students for the above subject and class:

**STRONG SKILLS:**

Skill 1: Number sense

Skill 4: Area and Perimeter, Volume and Surface Area

**WEAK SKILLS:**

Skill 5: Fractions, Decimals Ratios and Percentages

Skill 3: Measurement and its applications

# Test For Student Learning For Gyan Shala Program

HOW DID YOUR STUDENTS' PERFORM IN DIFFERENT SKILLS AND QUESTIONS THEY FOUND DIFFICULT/EASY

Medium: Gujarati

Group: Treatment AMC Schools

Language **3**

Test : March 2011

Number of Students: 840

Average Score: 34.1

SD: 19.9

S.No	Skill Name	Questions	Average	SD	Difference % (- 0 +)
1	Recognises and writes letters, knows alphabetical sequence and sound	1, 2, 3	55.8%	27.0%	
2	Reads and writes small and moderately difficult words and knows names of objects, birds, animals, etc seen in daily life	4, 5, 6, 7, 10	55.7%	27.6%	
3	Uses words appropriate to the context based on their meanings, number and gender	8, 9, 11, 12, 13, 14	35.8%	28.7%	
4	Reads and writes 3 simple and short sentences that have less than 5 words in a sentence	15, 16, 17	36.6%	32.9%	
5	Reads descriptive text, of 3-5 sentences independently and comprehends beyond stated facts	18, 19, 20, 21, 22, 23, 27, 28, 29, 30, 31, 32	22.2%	22.2%	
6	Understands written information presented in various forms as Tables, Notices, Tickets, Posters, Labels, etc seen in real life	24, 25, 26	17.7%	22.9%	

\* The Average Performance is calculated from the number of correct responses given by students to the questions constituting specific skills.

\* The Standard Deviation (SD) represents the variation in the performance on a particular skill expressed as a percentage.

\* A low SD implies that differences between the students is not very high.

\* Difference is change in skill scores over previous test.

## SOME INTERESTING ANALYSIS

\* ASSET Questions which students in your program found MOST DIFFICULT

Qno	% of Your Students Who Answered Correctly	% of ASSET Students Who Answered Correctly	Graph 0 % 100
26	12.7%	44.2%	Your Students
			Asset Students
3	12.9%	46.7%	Your Students
			Asset Students
23	13.0%	57.2%	Your Students
			Asset Students

\* ASSET is a diagnostic achievement test taken by English Medium Private Schools in India.

\* Questions which students in your program found MOST DIFFICULT/EASY

Qno	% of Your Students Who Answered Correctly	DIFFICULT/EASY
22	11.7%	DIFFICULT
26	12.7%	DIFFICULT
3	12.9%	DIFFICULT
1	87.0%	EASY
5	80.1%	EASY
10	79.9%	EASY

Here are the 2 STRONGEST and 2 WEAKEST skills of your students for the above subject and class:

**STRONG SKILLS:**

Skill 1: Recognises and writes letters, knows alphabetical sequence and sound

Skill 2: Reads and writes small and moderately difficult words and knows names of objects, birds, animals, etc seen in daily life

**WEAK SKILLS:**

Skill 6: Understands written information presented in various forms as Tables, Notices, Tickets, Posters, Labels, etc seen in real life

Skill 5: Reads descriptive text, of 3-5 sentences independently and comprehends beyond stated facts

# Test For Student Learning For Gyan Shala Program

HOW DID YOUR STUDENTS' PERFORM IN DIFFERENT SKILLS AND QUESTIONS THEY FOUND DIFFICULT/EASY

Medium: Gujarati

Group: Treatment AMC Schools

Maths **3**

Test : March 2011

Number of Students: 830

Average Score: 36.8

SD: 22.1

S.No	Skill Name	Questions	Average	SD	Difference % (- 0 +)
1	Pre-maths skills	1, 3, 8, 21	53.7%	31.8%	
2	Number sense	2, 4, 9, 10, 12, 24	38.3%	28.6%	
3	Four basic Arithmetic operations	5, 7, 13, 15, 17, 20	33.1%	26.6%	
4	Applications in daily life	14, 18, 22, 23, 25, 26	27.0%	26.0%	
5	Geometry: Basic Shapes	6, 11, 16, 19	37.7%	28.1%	

\* The Average Performance is calculated from the number of correct responses given by students to the questions constituting specific skills.

\* The Standard Deviation (SD) represents the variation in the performance on a particular skill expressed as a percentage.

\* A low SD implies that differences between the students is not very high.

\* Difference is change in skill scores over previous test.

## SOME INTERESTING ANALYSIS

\* ASSET Questions which students in your program found MOST DIFFICULT

Qno	% of Your Students Who Answered Correctly	% of ASSET Students Who Answered Correctly	Graph 0 % 100
17	10.5%	34.1%	<div> <div>Your Students</div> <div>Asset Students</div> </div>
24	20.1%	58.9%	<div> <div>Your Students</div> <div>Asset Students</div> </div>
25	20.7%	23.7%	<div> <div>Your Students</div> <div>Asset Students</div> </div>

\* ASSET is a diagnostic achievement test taken by English Medium Private Schools in India.

\* Questions which students in your program found MOST DIFFICULT/EASY

Qno	% of Your Students Who Answered Correctly	DIFFICULT/EASY
17	10.5%	DIFFICULT
16	16.1%	DIFFICULT
24	20.1%	DIFFICULT
8	72.3%	EASY
5	54.7%	EASY
3	53.5%	EASY

Here are the 2 STRONGEST and 2 WEAKEST skills of your students for the above subject and class:

**STRONG SKILLS:**

Skill 1: Pre-maths skills

Skill 2: Number sense

**WEAK SKILLS:**

Skill 4: Applications in daily life

Skill 3: Four basic Arithmetic operations



# Test For Student Learning For Gyan Shala Program

HOW DID YOUR STUDENTS' PERFORM IN DIFFERENT SKILLS AND QUESTIONS THEY FOUND DIFFICULT/EASY

Medium: Gujarati

Group: Treatment AMC Schools

Language **5**

Test : March 2011

Number of Students: 1045

Average Score: 34.8

SD: 16.4

S.No	Skill Name	Questions	Average	SD	Difference % (- 0 +)		
1	Reads and writes moderately difficult, long words and knows a wide range of names of objects, birds, animals, feelings	1, 2, 3, 4, 5	57.0%	23.3%			
2	Uses words appropriate to the context based on their meaning, gender, time and description	6, 7, 8, 9, 10, 11, 12, 13	43.4%	25.2%			
3	Reads, constructs and punctuates 3 simple sentences that have 5-7 words in a sentence	14, 15, 16	29.3%	27.6%			
4	Reads descriptive text, of 8-10 sentences independently and comprehends beyond stated facts	17, 18, 19, 20, 21, 22, 23, 24, 25, 26, 27, 28, 29, 30, 31, 32	25.2%	17.7%			
5	Understands written information presented in various forms as Tables, Notices, Tickets, Posters, Labels, etc seen in real life	33, 34, 35, 36, 37	30.7%	24.6%			
6	Expresses ideas coherently on a given topic by filling words in a passage/story/dialogue	38	44.6%	42.0%			

\* The Average Performance is calculated from the number of correct responses given by students to the questions constituting specific skills.

\* The Standard Deviation (SD) represents the variation in the performance on a particular skill expressed as a percentage.

\* A low SD implies that differences between the students is not very high.

\* Difference is change in skill scores over previous test.

## SOME INTERESTING ANALYSIS

\* ASSET Questions which students in your program found MOST DIFFICULT

Qno	% of Your Students Who Answered Correctly	% of ASSET Students Who Answered Correctly	Graph 0 % 100			
3	13.6%	36.7%	Your Students			
			Asset Students			
32	15.5%	47.0%	Your Students			
			Asset Students			
17	17.5%	77.9%	Your Students			
			Asset Students			

\* ASSET is a diagnostic achievement test taken by English Medium Private Schools in India.

\* Questions which students in your program found MOST DIFFICULT/EASY

Qno	% of Your Students Who Answered Correctly	DIFFICULT/EASY
30	10.2%	DIFFICULT
3	13.6%	DIFFICULT
29	14.1%	DIFFICULT
4	82.4%	EASY
5	78.6%	EASY
1	66.0%	EASY

Here are the 2 STRONGEST and 2 WEAKEST skills of your students for the above subject and class:

**STRONG SKILLS:**

Skill 1: Reads and writes moderately difficult, long words and knows a wide range of names of objects, birds, animals, feelings

Skill 6: Expresses ideas coherently on a given topic by filling words in a passage/story/dialogue

**WEAK SKILLS:**

Skill 4: Reads descriptive text, of 8-10 sentences independently and comprehends beyond stated facts

Skill 3: Reads, constructs and punctuates 3 simple sentences that have 5-7 words in a sentence

# Test For Student Learning For Gyan Shala Program

HOW DID YOUR STUDENTS' PERFORM IN DIFFERENT SKILLS AND QUESTIONS THEY FOUND DIFFICULT/EASY

Medium: Gujarati

Group: Treatment AMC Schools

Maths **5**

Test : March 2011

Number of Students: 965

Average Score: 28.9

SD: 13.5

S.No	Skill Name	Questions	Average	SD	Difference % (- 0 +)
1	Number sense	1, 2, 6, 22	35.5%	22.5%	
2	Four basic Arithmetic operations	12, 14, 15, 20, 24, 30	26.4%	20.2%	
3	Measurement and its applications	7, 9, 13, 16, 28	26.5%	21.4%	
4	Area and Perimeter, Volume and Surface Area	5, 21	38.3%	31.0%	
5	Fractions, Decimals Ratios and Percentages	11, 17, 29	19.1%	22.4%	
6	Data interpretation and analysis	26, 27, 31	26.5%	25.8%	
7	Applications in daily life	3, 8, 19, 25	31.0%	25.3%	
8	Geometry: Basic Shapes	4, 10, 18, 23	31.3%	24.9%	

\* The Average Performance is calculated from the number of correct responses given by students to the questions constituting specific skills.

\* The Standard Deviation (SD) represents the variation in the performance on a particular skill expressed as a percentage.

\* A low SD implies that differences between the students is not very high.

\* Difference is change in skill scores over previous test.

## SOME INTERESTING ANALYSIS

\* ASSET Questions which students in your program found MOST DIFFICULT

Qno	% of Your Students Who Answered Correctly	% of ASSET Students Who Answered Correctly	Graph 0 % 100
6	9.8%	32.8%	Your Students
			Asset Students
19	11.2%	40.2%	Your Students
			Asset Students
29	11.7%	22.7%	Your Students
			Asset Students

\* ASSET is a diagnostic achievement test taken by English Medium Private Schools in India.

\* Questions which students in your program found MOST DIFFICULT/EASY

Qno	% of Your Students Who Answered Correctly	DIFFICULT/EASY
28	8.8%	DIFFICULT
6	9.8%	DIFFICULT
19	11.2%	DIFFICULT
2	65.7%	EASY
5	62.1%	EASY
1	49.6%	EASY

Here are the 2 STRONGEST and 2 WEAKEST skills of your students for the above subject and class:

**STRONG SKILLS:**

Skill 4: Area and Perimeter, Volume and Surface Area

Skill 1: Number sense

**WEAK SKILLS:**

Skill 5: Fractions, Decimals Ratios and Percentages

Skill 2: Four basic Arithmetic operations

# Test For Student Learning For Gyan Shala Program

## HOW ARE YOUR STUDENTS' SCORES DISTRIBUTED?

Medium: Gujarati

Group: Gyan Shala Schools

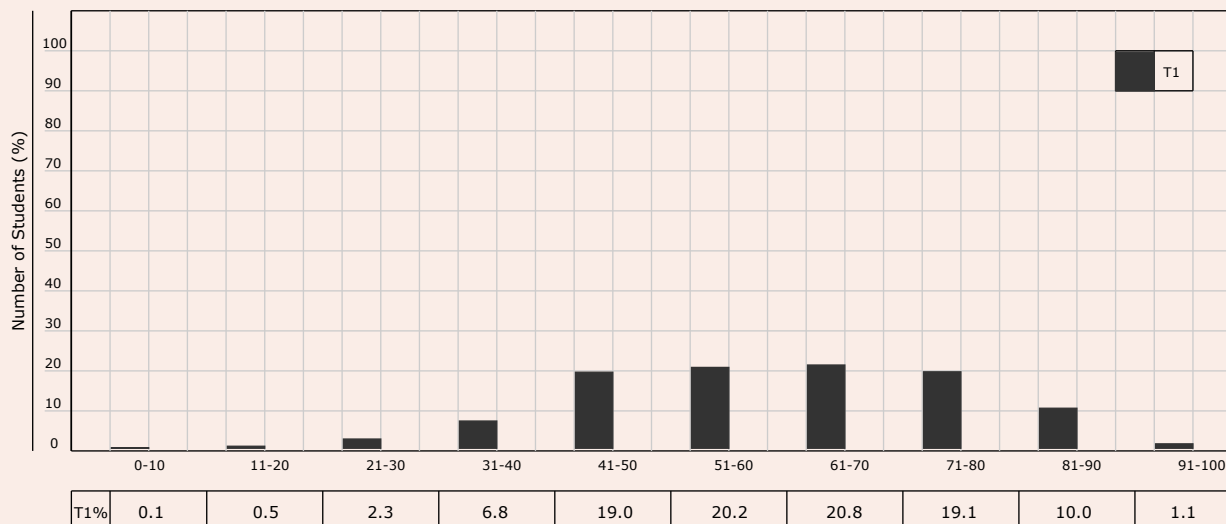
Language **3**

Test 1 (T1): March 2011

Number of Students: 1915

Average Score: 60.6

SD: 15.7



Medium: Gujarati

Group: Gyan Shala Schools

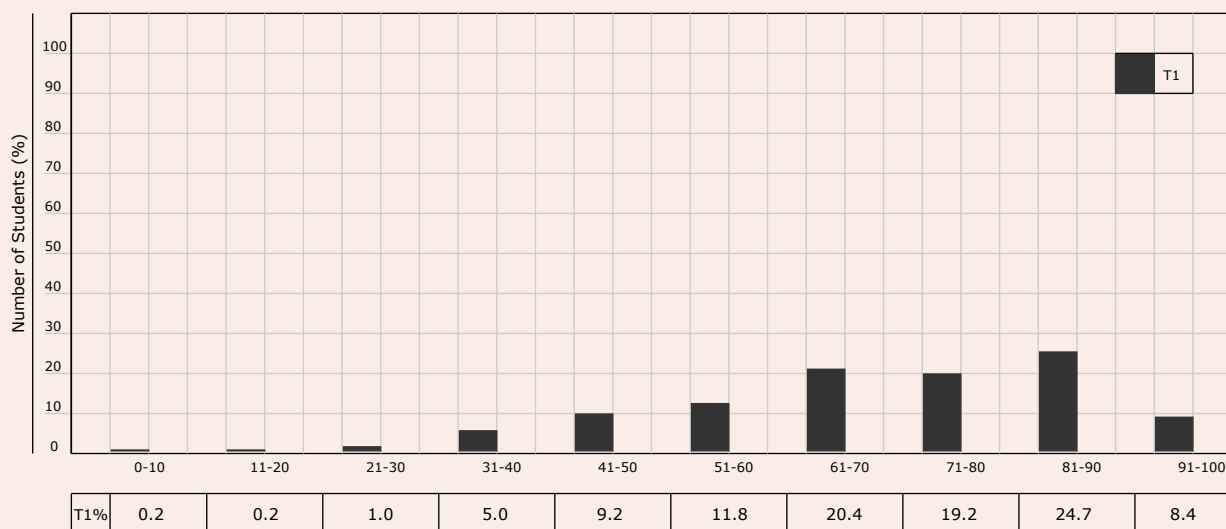
Maths **3**

Test 1 (T1): March 2011

Number of Students: 1912

Average Score: 69.4

SD: 16.7



# Test For Student Learning For Gyan Shala Program

## HOW ARE YOUR STUDENTS' SCORES DISTRIBUTED?

Medium: Gujarati

Group: Gyan Shala Schools

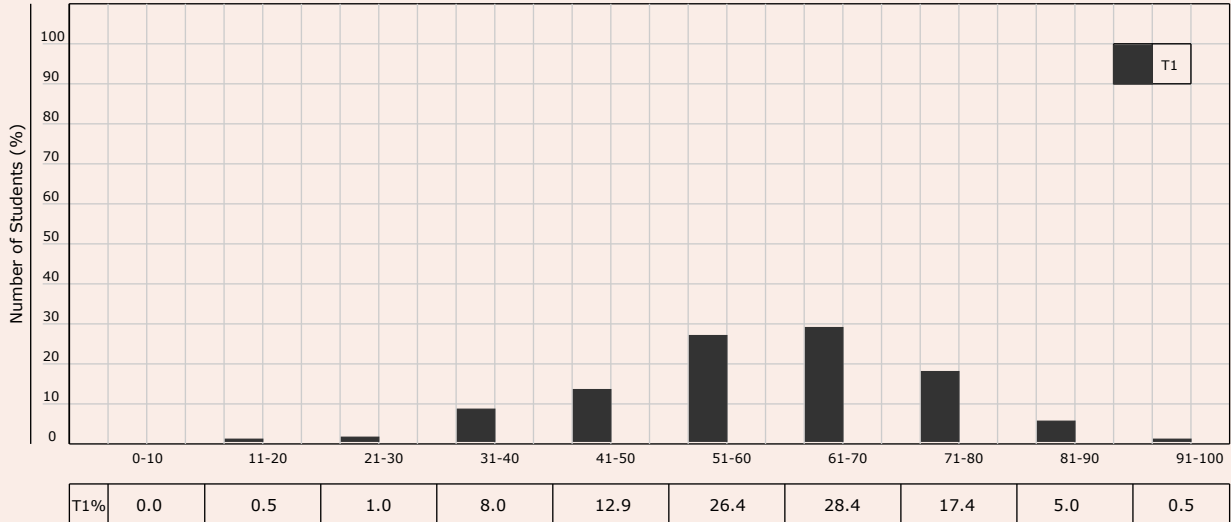
Language **5**

Test 1 (T1): March 2011

Number of Students: 201

Average Score: 60.3

SD: 13.3



Medium: Gujarati

Group: Gyan Shala Schools

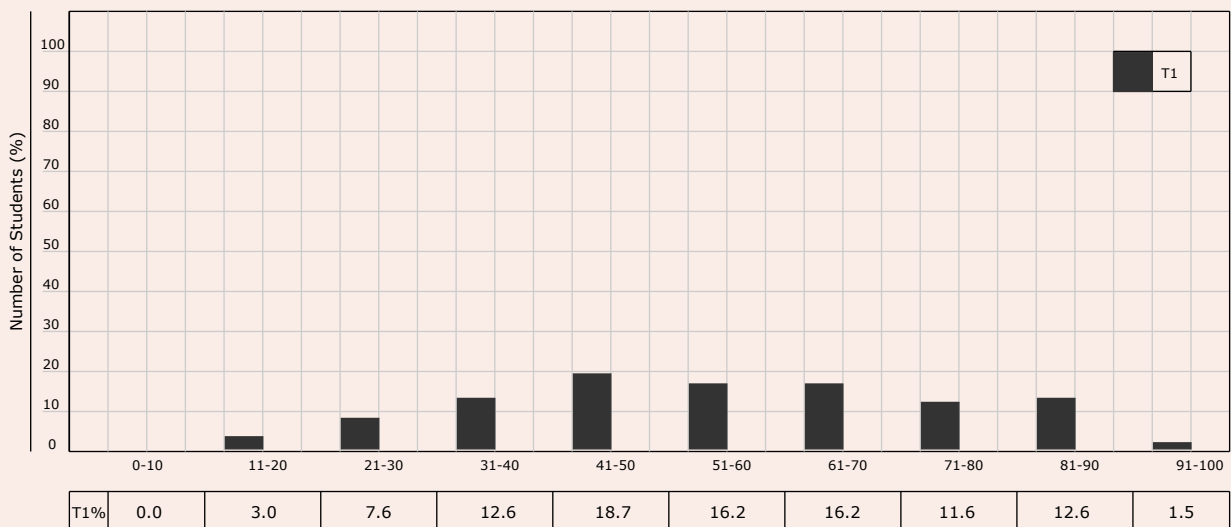
Maths **5**

Test 1 (T1): March 2011

Number of Students: 198

Average Score: 55.5

SD: 19.1



# Test For Student Learning For Gyan Shala Program

## HOW ARE YOUR STUDENTS' SCORES DISTRIBUTED?

Medium: Gujarati

Group: Treatment AMC Schools

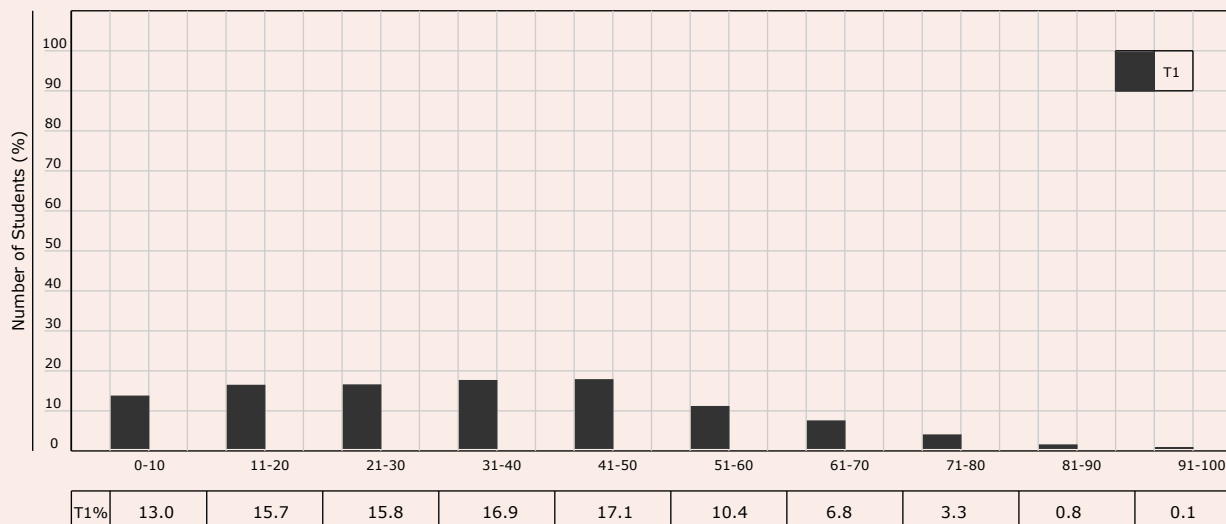
Language **3**

Test 1 (T1): March 2011

Number of Students: 840

Average Score: 34.1

SD: 19.9



Medium: Gujarati

Group: Treatment AMC Schools

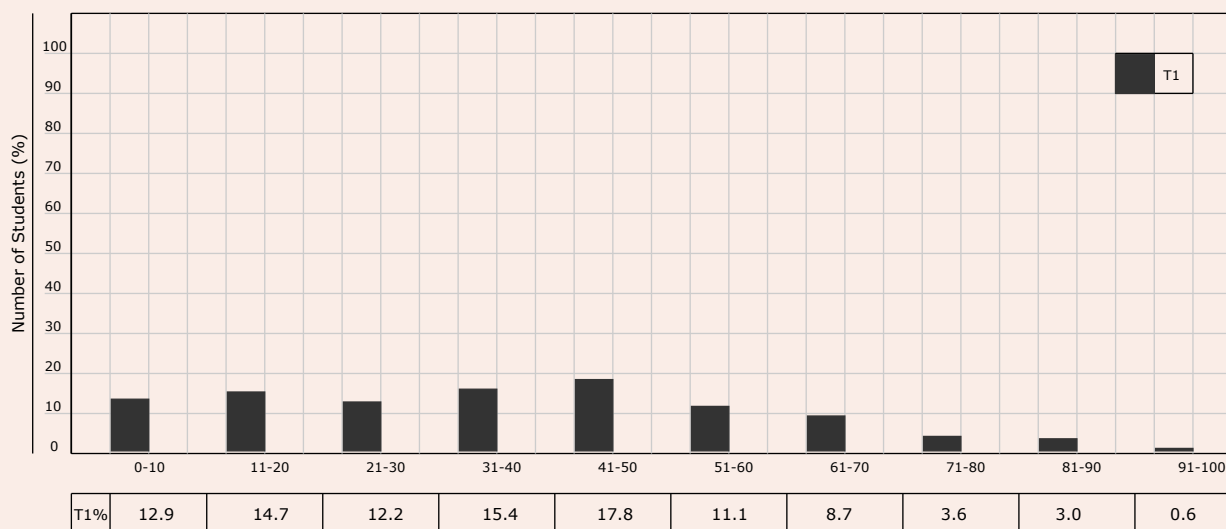
Maths **3**

Test 1 (T1): March 2011

Number of Students: 830

Average Score: 36.8

SD: 22.1



# Test For Student Learning For Gyan Shala Program

## HOW ARE YOUR STUDENTS' SCORES DISTRIBUTED?

Medium: Gujarati

Group: Treatment AMC Schools

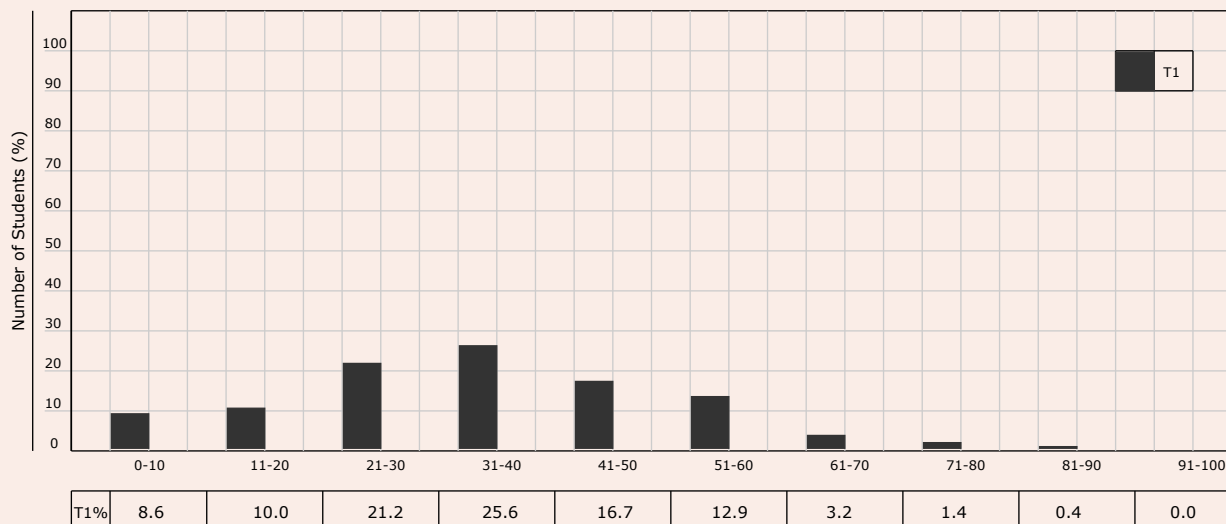
Language **5**

Test 1 (T1): March 2011

Number of Students: 1045

Average Score: 34.8

SD: 16.4



Medium: Gujarati

Group: Treatment AMC Schools

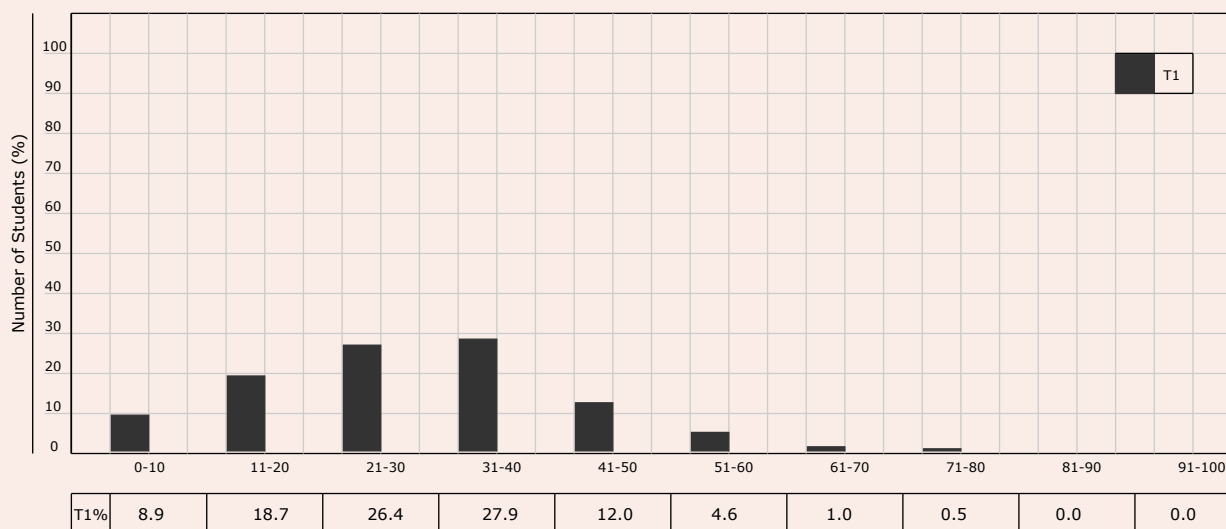
Maths **5**

Test 1 (T1): March 2011

Number of Students: 965

Average Score: 28.9

SD: 13.5



# Test For Student Learning For Gyan Shala Program

## WHAT DID YOUR STUDENTS ANSWER?

Medium: Gujarati

Group: Gyan Shala Schools

Class: 3

Test: March 2011

Number of Students: 1915

Subject: Language

Question No	Score %	Answer Codes %																										
		01	02	03	11	12	13	21	22	23	31	32	33	81	82	83	84	85	87	89	A	B	C	D	E	86	88	
1	99.1	99.1	-	-	-	-	-	-	-	-	-	-	-	0.1	-	-	-	0.2	-	-	-	-	-	-	-	0.3	0.3	
2	97.5	97.5	-	-	-	-	-	-	-	-	-	-	-	0.6	-	-	-	0.9	-	-	-	-	-	-	-	0.6	0.4	
3	33.4	-	-	-	-	-	-	-	-	-	-	-	-	-	-	-	-	-	-	-	7.9	11.6	33.4	20.4	-	21.9	4.8	
4	69.9	-	-	-	-	-	-	-	-	-	-	-	-	-	-	-	-	-	-	-	3.5	4.6	69.9	19.7	-	1.8	0.4	
5	95.9	-	-	-	-	-	-	-	-	-	-	-	-	-	-	-	-	-	-	-	0.7	1.3	1.2	95.9	-	0.5	0.4	
6	48.7	-	-	-	-	-	-	-	-	-	-	-	-	-	-	-	-	-	-	-	12.6	48.7	12.2	17.6	-	5.6	3.3	
7	59.8	-	-	-	-	-	-	-	-	-	-	-	-	-	-	-	-	-	-	-	25.9	4.1	5.1	59.8	-	3.3	1.8	
8	65.2	-	-	-	-	-	-	-	-	-	-	-	-	-	-	-	-	-	-	-	65.2	9.7	5.3	7.9	-	9.1	2.7	
9	65.3	-	-	-	-	-	-	-	-	-	-	-	-	-	-	-	-	-	-	-	13.6	65.3	9.8	6.1	-	2.4	2.8	
10	95.7	95.7	-	-	-	-	-	-	-	-	-	-	-	-	-	-	-	1.9	-	-	-	-	-	-	-	1.6	0.8	
11	74.2	-	-	-	-	-	-	-	-	-	-	-	-	-	-	-	-	-	-	-	11.8	74.2	4.1	2.8	-	5.8	1.4	
12	85.8	-	-	-	-	-	-	-	-	-	-	-	-	-	-	-	-	-	-	-	6.7	1.6	2.8	85.8	-	2.6	0.6	
13	50.8	-	-	-	-	-	-	-	-	-	-	-	-	-	-	-	-	-	-	-	50.8	8.6	5.6	31.4	-	2.7	0.8	
14	82.9	-	-	-	-	-	-	-	-	-	-	-	-	-	-	-	-	-	-	-	8.4	3.2	82.9	1.8	-	2.8	0.9	
15	59.0	-	-	-	-	-	-	-	-	-	-	-	-	-	-	-	-	-	-	-	10.7	13.7	59.0	10.8	-	2.5	3.3	
16	86.1	83.9	-	-	-	-	-	3.6	-	-	1.6	-	-	-	-	-	-	7.6	-	-	-	-	-	-	-	2.3	1.0	
17	73.2	-	-	-	-	-	-	-	-	-	-	-	-	-	-	-	-	-	-	-	73.2	11.0	2.6	5.1	-	5.7	2.3	
18	40.8	-	-	-	-	-	-	-	-	-	-	-	-	-	-	-	-	-	-	-	8.0	40.8	4.1	40.4	-	4.0	2.7	
19	50.0	-	-	-	-	-	-	-	-	-	-	-	-	-	-	-	-	-	-	-	50.0	9.7	25.1	8.5	-	3.7	3.0	
20	23.5	-	-	-	-	-	-	-	-	-	-	-	-	-	-	-	-	-	-	-	7.4	4.6	23.5	60.2	-	3.0	1.4	
21	50.7	-	-	-	-	-	-	-	-	-	-	-	-	-	-	-	-	-	-	-	12.1	50.7	9.8	21.8	-	2.6	3.1	
22	25.6	24.5	-	-	-	-	-	2.2	-	-	-	-	-	-	-	-	-	52.4	-	-	-	-	-	-	-	9.5	11.4	
23	37.2	-	-	-	-	-	-	-	-	-	-	-	-	-	-	-	-	-	-	-	37.2	22.1	15.9	11.9	-	8.6	4.3	
24	47.7	-	-	-	-	-	-	-	-	-	-	-	-	-	-	-	-	-	-	-	6.4	2.0	38.2	47.7	-	3.7	2.0	
25	28.7	-	-	-	-	-	-	-	-	-	-	-	-	-	-	-	-	-	-	-	10.6	14.2	28.7	41.3	-	2.9	2.4	
26	19.1	-	-	-	-	-	-	-	-	-	-	-	-	-	-	-	-	-	-	-	28.4	39.2	19.1	7.8	-	3.0	2.5	
27	73.8	-	-	-	-	-	-	-	-	-	-	-	-	-	-	-	-	-	-	-	3.1	2.6	13.4	73.8	-	5.0	2.1	
28	56.8	-	-	-	-	-	-	-	-	-	-	-	-	-	-	-	-	-	-	-	18.7	9.5	10.6	56.8	-	2.3	2.1	
29	59.6	-	-	-	-	-	-	-	-	-	-	-	-	-	-	-	-	-	-	-	14.4	13.3	59.6	7.2	-	1.8	3.7	
30	58.4	-	-	-	-	-	-	-	-	-	-	-	-	-	-	-	-	-	-	-	12.8	58.4	10.7	12.2	-	2.1	3.8	
31	58.8	-	-	-	-	-	-	-	-	-	-	-	-	-	-	-	-	-	-	-	7.2	6.2	22.0	58.8	-	4.1	1.7	
32	66.0	-	-	-	-	-	-	-	-	-	-	-	-	-	-	-	-	-	-	-	8.8	66.0	7.7	11.6	-	3.6	2.3	
33																												
34																												
35																												
36																												
37																												
38																												
39																												
40																												
41																												
42																												
43																												
44																												
45																												
46																												
47																												
48																												
49																												
50																												

\* Answer Codes % is the percentage of students who obtained that specific answer code. Please see score card for that question for answer code description.

\* Score % is the percentage of students who answered the question correctly.



# Test For Student Learning For Gyan Shala Program

## WHAT DID YOUR STUDENTS ANSWER?

Medium: Gujarati

Group: Gyan Shala Schools

Class: 3

Test: March 2011

Number of Students: 1912

Subject: Maths

Question No	Score %	Answer Codes %																											
		01	02	03	11	12	13	21	22	23	31	32	33	81	82	83	84	85	87	89	A	B	C	D	E	86	88		
1	75.6	-	-	-	-	-	-	-	-	-	-	-	-	-	-	-	-	-	-	-	2.3	19.0	75.6	1.6	-	0.4	1.0		
2	82.7	-	-	-	-	-	-	-	-	-	-	-	-	-	-	-	-	-	-	-	7.1	82.8	2.7	3.8	-	0.7	2.9		
3	84.3	-	-	-	-	-	-	-	-	-	-	-	-	-	-	-	-	-	-	-	84.4	1.0	0.9	11.3	-	0.7	1.7		
4	86.6	-	-	-	-	-	-	-	-	-	-	-	-	-	-	-	-	-	-	-	4.9	86.6	1.0	1.1	-	3.8	2.6		
5	91.0	-	-	-	-	-	-	-	-	-	-	-	-	-	-	-	-	-	-	-	0.7	3.0	91.1	1.6	-	3.1	0.5		
6	87.8	-	-	-	-	-	-	-	-	-	-	-	-	-	-	-	-	-	-	-	7.0	0.6	0.7	87.8	-	0.4	3.6		
7	80.8	-	-	-	-	-	-	-	-	-	-	-	-	-	-	-	-	-	-	-	5.5	2.7	6.0	80.8	-	3.8	1.2		
8	92.8	-	-	-	-	-	-	-	-	-	-	-	-	-	-	-	-	-	-	-	0.3	92.8	0.3	2.1	-	0.9	3.5		
9	83.1	-	-	-	-	-	-	-	-	-	-	-	-	-	-	-	-	-	-	-	1.4	8.6	2.7	83.2	-	2.7	1.4		
10	82.7	-	-	-	-	-	-	-	-	-	-	-	-	-	-	-	-	-	-	-	5.5	82.7	2.5	4.5	-	2.9	1.9		
11	52.2	-	-	-	-	-	-	-	-	-	-	-	-	-	-	-	-	-	-	-	24.1	5.0	10.5	52.2	-	2.3	5.9		
12	65.4	-	-	-	-	-	-	-	-	-	-	-	-	-	-	-	-	-	-	-	7.3	65.5	10.1	2.5	-	12.9	1.8		
13	76.7	-	-	-	-	-	-	-	-	-	-	-	-	-	-	-	-	-	-	-	76.7	2.1	5.1	11.1	-	4.2	0.7		
14	67.9	-	-	-	-	-	-	-	-	-	-	-	-	-	-	-	-	-	-	-	15.5	11.7	68.0	2.1	-	0.7	2.0		
15	75.5	-	-	-	-	-	-	-	-	-	-	-	-	-	-	-	-	-	-	-	75.5	4.1	8.7	9.3	-	1.3	1.2		
16	16.0	-	-	-	-	-	-	-	-	-	-	-	-	-	-	-	-	-	-	-	3.5	45.9	32.2	16.0	-	1.7	0.7		
17	25.4	-	-	-	-	-	-	-	-	-	-	-	-	-	-	-	-	-	-	-	26.8	25.4	28.5	12.7	-	3.0	3.6		
18	70.1	-	-	-	-	-	-	-	-	-	-	-	-	-	-	-	-	-	-	-	8.6	4.8	70.2	6.4	-	8.7	1.4		
19	84.4	-	-	-	-	-	-	-	-	-	-	-	-	-	-	-	-	-	-	-	84.5	6.9	2.7	3.3	-	1.4	1.2		
20	61.2	-	-	-	-	-	-	-	-	-	-	-	-	-	-	-	-	-	-	-	10.8	10.7	61.2	12.0	-	4.0	1.3		
21	67.0	-	-	-	-	-	-	-	-	-	-	-	-	-	-	-	-	-	-	-	12.7	13.5	2.8	67.1	-	1.6	2.4		
22	59.0	-	-	-	-	-	-	-	-	-	-	-	-	-	-	-	-	-	-	-	59.0	10.8	6.0	20.6	-	1.8	1.7		
23	60.2	-	-	-	-	-	-	-	-	-	-	-	-	-	-	-	-	-	-	-	2.3	12.4	60.2	19.0	-	3.5	2.6		
24	63.2	-	-	-	-	-	-	-	-	-	-	-	-	-	-	-	-	-	-	-	5.4	8.4	63.3	19.6	-	2.6	0.8		
25	47.2	-	-	-	-	-	-	-	-	-	-	-	-	-	-	-	-	-	-	-	47.3	8.1	13.7	28.7	-	1.3	0.9		
26	66.9	-	-	-	-	-	-	-	-	-	-	-	-	-	-	-	-	-	-	-	14.1	6.7	9.5	67.0	-	1.6	1.1		
27																													
28																													
29																													
30																													
31																													
32																													
33																													
34																													
35																													
36																													
37																													
38																													
39																													
40																													
41																													
42																													
43																													
44																													
45																													
46																													
47																													
48																													
49																													
50																													

\* Answer Codes % is the percentage of students who obtained that specific answer code. Please see score card for that question for answer code description.

\* Score % is the percentage of students who answered the question correctly.

# Test For Student Learning For Gyan Shala Program

## WHAT DID YOUR STUDENTS ANSWER?

Medium: Gujarati

Group: Gyan Shala Schools

Class: 5

Test: March 2011

Number of Students: 201

Subject: Language

Question No	Score %	Answer Codes %																											
		01	02	03	11	12	13	21	22	23	31	32	33	81	82	83	84	85	87	89	A	B	C	D	E	86	88		
1	92.5	-	-	-	-	-	-	-	-	-	-	-	-	-	-	-	-	-	-	-	1.5	92.5	3.0	0.5	-	1.5	1.0		
2	65.2	-	-	-	-	-	-	-	-	-	-	-	-	-	-	-	-	-	-	-	65.2	10.9	6.0	8.0	-	9.5	0.5		
3	27.4	-	-	-	-	-	-	-	-	-	-	-	-	-	-	-	-	-	-	-	53.2	9.5	27.4	5.5	-	1.0	3.5		
4	96.5	-	-	-	-	-	-	-	-	-	-	-	-	-	-	-	-	-	-	-	96.5	-	0.5	1.0	-	2.0	-		
5	97.0	92.0	5.0	-	-	-	-	-	-	-	-	-	-	-	-	-	-	1.0	-	-	-	-	-	-	-	-	1.5		
6	80.1	-	-	-	-	-	-	-	-	-	-	-	-	-	-	-	-	-	-	-	8.0	4.5	80.1	7.0	-	0.5	-		
7	59.7	-	-	-	-	-	-	-	-	-	-	-	-	-	-	-	-	-	-	-	13.4	19.9	59.7	6.5	-	0.5	-		
8	87.1	-	-	-	-	-	-	-	-	-	-	-	-	-	-	-	-	-	-	-	4.5	4.5	87.1	2.5	-	1.5	-		
9	60.2	-	-	-	-	-	-	-	-	-	-	-	-	-	-	-	-	-	-	-	60.2	8.5	12.4	17.9	-	0.5	0.5		
10	80.6	-	-	-	-	-	-	-	-	-	-	-	-	-	-	-	-	-	-	-	13.4	4.0	1.5	80.6	-	0.5	-		
11	78.6	-	-	-	-	-	-	-	-	-	-	-	-	-	-	-	-	-	-	-	3.0	15.4	78.6	2.5	-	0.5	-		
12	84.1	-	-	-	-	-	-	-	-	-	-	-	-	-	-	-	-	-	-	-	84.1	6.0	5.5	4.5	-	-	-		
13	34.3	-	-	-	-	-	-	-	-	-	-	-	-	-	-	-	-	-	-	-	2.0	34.3	57.2	4.0	-	1.0	1.0		
14	61.2	-	-	-	-	-	-	-	-	-	-	-	-	-	-	-	-	-	-	-	61.2	15.4	6.5	10.9	-	4.5	1.5		
15	64.2	-	-	-	-	-	-	-	-	-	-	-	-	-	-	-	-	-	-	-	11.4	4.0	64.2	11.9	-	6.0	2.0		
16	51.7	-	-	-	-	-	-	-	-	-	-	-	-	-	-	-	-	-	-	-	26.4	51.7	10.4	7.0	-	1.5	3.0		
17	58.2	-	-	-	-	-	-	-	-	-	-	-	-	-	-	-	-	-	-	-	14.4	14.4	10.0	58.2	-	2.5	0.5		
18	50.7	-	-	-	-	-	-	-	-	-	-	-	-	-	-	-	-	-	-	-	50.7	28.4	6.5	13.4	-	1.0	-		
19	46.3	-	-	-	-	-	-	-	-	-	-	-	-	-	-	-	-	-	-	-	45.3	46.3	3.5	2.5	-	2.0	0.5		
20	52.7	52.7	-	-	-	-	-	-	-	-	-	-	-	-	-	-	-	29.9	-	-	-	-	-	-	-	13.9	3.5		
21	67.7	67.7	-	-	-	-	-	-	-	-	-	-	-	-	-	-	-	15.9	-	-	-	-	-	-	-	10.0	6.5		
22	48.3	-	-	-	-	-	-	-	-	-	-	-	-	-	-	-	-	-	-	-	8.5	2.0	48.3	40.3	-	0.5	-		
23	65.2	-	-	-	-	-	-	-	-	-	-	-	-	-	-	-	-	-	-	-	65.2	8.5	6.0	17.4	-	2.0	1.0		
24	57.7	-	-	-	-	-	-	-	-	-	-	-	-	-	-	-	-	-	-	-	6.5	12.4	22.4	57.7	-	0.5	0.5		
25	76.6	-	-	-	-	-	-	-	-	-	-	-	-	-	-	-	-	-	-	-	4.5	12.4	5.5	76.6	-	0.5	0.5		
26	29.4	-	-	-	-	-	-	-	-	-	-	-	-	-	-	-	-	-	-	-	48.3	8.0	12.9	29.4	-	-	0.5		
27	70.1	-	-	-	-	-	-	-	-	-	-	-	-	-	-	-	-	-	-	-	4.5	70.1	8.0	16.4	-	0.5	0.5		
28	42.3	-	-	-	-	-	-	-	-	-	-	-	-	-	-	-	-	-	-	-	21.4	42.3	15.4	18.4	-	2.5	-		
29	25.4	-	-	-	-	-	-	-	-	-	-	-	-	-	-	-	-	-	-	-	3.5	29.9	25.4	34.8	-	5.0	1.5		
30	57.2	57.2	-	-	-	-	-	-	-	-	-	-	-	-	-	-	-	28.9	-	-	-	-	-	-	-	10.0	4.0		
31	41.3	-	-	-	-	-	-	-	-	-	-	-	-	-	-	-	-	-	-	-	6.0	6.5	41.3	45.8	-	0.5	-		
32	36.3	-	-	-	-	-	-	-	-	-	-	-	-	-	-	-	-	-	-	-	41.3	10.0	11.4	36.3	-	1.0	-		
33	60.2	-	-	-	-	-	-	-	-	-	-	-	-	-	-	-	-	-	-	-	22.9	5.0	60.2	6.5	-	4.5	1.0		
34	49.8	-	-	-	-	-	-	-	-	-	-	-	-	-	-	-	-	-	-	-	36.8	3.5	8.0	49.8	-	1.0	1.0		
35	33.8	-	-	-	-	-	-	-	-	-	-	-	-	-	-	-	-	-	-	-	14.9	33.8	27.4	16.4	-	6.5	1.0		
36	88.1	-	-	-	-	-	-	-	-	-	-	-	-	-	-	-	-	-	-	-	2.5	6.5	3.0	88.1	-	-	-		
37	38.3	-	-	-	-	-	-	-	-	-	-	-	-	-	-	-	-	-	-	-	38.3	17.4	6.0	37.3	-	1.0	-		
38	74.4	47.8	-	-	23.9	-	-	12.9	-	-	9.0	-	-	-	-	-	-	4.5	-	-	-	-	-	-	-	1.0	1.0		
39																													
40																													
41																													
42																													
43																													
44																													
45																													
46																													
47																													
48																													
49																													
50																													

\* Answer Codes % is the percentage of students who obtained that specific answer code. Please see score card for that question for answer code description.

\* Score % is the percentage of students who answered the question correctly.

### WHAT DID YOUR STUDENTS ANSWER?

Test: March 2011

Subject: Maths

\* Answer Codes % is the percentage of students who obtained that specific answer code. Please see score card for that question for answer code description.  
\* Score % is the percentage of students who answered the question correctly.

# Test For Student Learning For Gyan Shala Program

## WHAT DID YOUR STUDENTS ANSWER?

Medium: Gujarati

Group: Treatment AMC Schools

Class: 3

Test: March 2011

Number of Students: 840

Subject: Language

Question No	Score %	Answer Codes %																											
		01	02	03	11	12	13	21	22	23	31	32	33	81	82	83	84	85	87	89	A	B	C	D	E	86	88		
1	87.0	87.0	-	-	-	-	-	-	-	-	-	-	-	0.4	-	-	-	3.5	-	-	-	-	-	-	-	3.7	5.5		
2	67.5	67.5	-	-	-	-	-	-	-	-	-	-	-	1.0	-	-	-	16.3	-	-	-	-	-	-	-	8.8	6.4		
3	12.9	-	-	-	-	-	-	-	-	-	-	-	-	-	-	-	-	-	-	-	5.8	3.5	12.9	9.9	-	36.1	31.9		
4	50.6	-	-	-	-	-	-	-	-	-	-	-	-	-	-	-	-	-	-	-	7.5	7.9	50.6	16.7	-	9.8	7.6		
5	80.1	-	-	-	-	-	-	-	-	-	-	-	-	-	-	-	-	-	-	-	1.1	1.5	2.7	80.1	-	7.1	7.4		
6	32.0	-	-	-	-	-	-	-	-	-	-	-	-	-	-	-	-	-	-	-	11.9	32.0	12.7	12.5	-	12.4	18.5		
7	36.1	-	-	-	-	-	-	-	-	-	-	-	-	-	-	-	-	-	-	-	21.5	6.5	8.5	36.1	-	11.2	16.2		
8	27.4	-	-	-	-	-	-	-	-	-	-	-	-	-	-	-	-	-	-	-	27.4	9.3	5.2	6.4	-	34.2	17.5		
9	33.1	-	-	-	-	-	-	-	-	-	-	-	-	-	-	-	-	-	-	-	13.3	33.1	11.7	7.7	-	7.4	26.8		
10	79.9	79.9	-	-	-	-	-	-	-	-	-	-	-	-	-	-	-	3.0	-	-	-	-	-	-	-	8.0	9.0		
11	35.0	-	-	-	-	-	-	-	-	-	-	-	-	-	-	-	-	-	-	-	13.9	35.0	3.5	4.6	-	22.5	20.5		
12	48.6	-	-	-	-	-	-	-	-	-	-	-	-	-	-	-	-	-	-	-	13.5	3.8	6.8	48.6	-	18.8	8.6		
13	26.1	-	-	-	-	-	-	-	-	-	-	-	-	-	-	-	-	-	-	-	26.1	9.8	10.2	24.4	-	19.0	10.5		
14	44.6	-	-	-	-	-	-	-	-	-	-	-	-	-	-	-	-	-	-	-	13.8	2.9	44.6	8.8	-	17.1	12.7		
15	32.1	-	-	-	-	-	-	-	-	-	-	-	-	-	-	-	-	-	-	-	9.8	16.9	32.1	7.9	-	7.6	25.7		
16	41.3	32.0	-	-	-	-	-	11.5	-	-	13.9	-	-	-	-	-	-	12.0	-	-	-	-	-	-	-	11.4	19.0		
17	36.3	-	-	-	-	-	-	-	-	-	-	-	-	-	-	-	-	-	-	-	36.3	18.7	3.2	4.0	-	7.3	30.5		
18	20.6	-	-	-	-	-	-	-	-	-	-	-	-	-	-	-	-	-	-	-	6.4	20.6	7.6	31.3	-	10.7	23.3		
19	22.6	-	-	-	-	-	-	-	-	-	-	-	-	-	-	-	-	-	-	-	22.6	16.9	14.4	8.1	-	8.8	29.2		
20	17.5	-	-	-	-	-	-	-	-	-	-	-	-	-	-	-	-	-	-	-	9.6	9.6	17.5	31.3	-	7.9	24.0		
21	21.5	-	-	-	-	-	-	-	-	-	-	-	-	-	-	-	-	-	-	-	10.4	21.5	11.4	22.4	-	6.5	27.7		
22	11.7	10.0	-	-	-	-	-	3.5	-	-	-	-	-	-	-	-	-	19.2	-	-	-	-	-	-	-	19.0	48.3		
23	13.0	-	-	-	-	-	-	-	-	-	-	-	-	-	-	-	-	-	-	-	13.0	14.5	9.8	11.3	-	22.0	29.4		
24	20.0	-	-	-	-	-	-	-	-	-	-	-	-	-	-	-	-	-	-	-	9.3	5.4	29.4	20.0	-	6.7	29.3		
25	20.5	-	-	-	-	-	-	-	-	-	-	-	-	-	-	-	-	-	-	-	10.5	14.2	20.5	18.3	-	6.3	30.2		
26	12.7	-	-	-	-	-	-	-	-	-	-	-	-	-	-	-	-	-	-	-	23.1	17.9	12.7	7.1	-	8.2	31.0		
27	30.2	-	-	-	-	-	-	-	-	-	-	-	-	-	-	-	-	-	-	-	4.6	6.0	14.6	30.2	-	21.4	23.1		
28	20.8	-	-	-	-	-	-	-	-	-	-	-	-	-	-	-	-	-	-	-	18.5	12.9	14.9	20.8	-	7.6	25.4		
29	30.4	-	-	-	-	-	-	-	-	-	-	-	-	-	-	-	-	-	-	-	12.9	11.3	30.4	9.2	-	7.3	29.0		
30	21.5	-	-	-	-	-	-	-	-	-	-	-	-	-	-	-	-	-	-	-	13.0	21.5	13.6	15.0	-	5.0	31.8		
31	30.6	-	-	-	-	-	-	-	-	-	-	-	-	-	-	-	-	-	-	-	4.3	8.6	16.7	30.6	-	15.7	24.2		
32	26.1	-	-	-	-	-	-	-	-	-	-	-	-	-	-	-	-	-	-	-	11.5	26.1	7.4	13.0	-	14.3	27.7		
33																													
34																													
35																													
36																													
37																													
38																													
39																													
40																													
41																													
42																													
43																													
44																													
45																													
46																													
47																													
48																													
49																													
50																													

\* Answer Codes % is the percentage of students who obtained that specific answer code. Please see score card for that question for answer code description.

\* Score % is the percentage of students who answered the question correctly.

### WHAT DID YOUR STUDENTS ANSWER?

Test: March 2011

Subject: Maths

\* Answer Codes % is the percentage of students who obtained that specific answer code. Please see score card for that question for answer code description.  
\* Score % is the percentage of students who answered the question correctly.

# Test For Student Learning For Gyan Shala Program

## WHAT DID YOUR STUDENTS ANSWER?

Medium: Gujarati

Group: Treatment AMC Schools

Class: 5

Test: March 2011

Number of Students: 1045

Subject: Language

Question No	Score %	Answer Codes %																											
		01	02	03	11	12	13	21	22	23	31	32	33	81	82	83	84	85	87	89	A	B	C	D	E	86	88		
1	66.0	-	-	-	-	-	-	-	-	-	-	-	-	-	-	-	-	-	-	-	6.9	66.0	4.6	2.7	-	12.4	7.4		
2	44.6	-	-	-	-	-	-	-	-	-	-	-	-	-	-	-	-	-	-	-	44.6	12.2	11.1	7.8	-	19.6	4.8		
3	13.6	-	-	-	-	-	-	-	-	-	-	-	-	-	-	-	-	-	-	-	21.1	11.1	13.6	4.3	-	19.7	30.2		
4	82.4	-	-	-	-	-	-	-	-	-	-	-	-	-	-	-	-	-	-	-	82.4	1.7	0.8	1.7	-	3.8	9.6		
5	78.6	73.2	5.4	-	-	-	-	-	-	-	-	-	-	-	-	-	-	8.5	-	-	-	-	-	-	-	4.8	8.1		
6	48.4	-	-	-	-	-	-	-	-	-	-	-	-	-	-	-	-	-	-	-	13.5	8.2	48.4	14.2	-	9.6	6.1		
7	31.2	-	-	-	-	-	-	-	-	-	-	-	-	-	-	-	-	-	-	-	25.8	20.3	31.2	6.8	-	6.7	9.2		
8	47.1	-	-	-	-	-	-	-	-	-	-	-	-	-	-	-	-	-	-	-	11.8	16.0	47.1	7.1	-	11.1	7.0		
9	41.2	-	-	-	-	-	-	-	-	-	-	-	-	-	-	-	-	-	-	-	41.2	18.0	8.9	15.6	-	7.8	8.5		
10	47.8	-	-	-	-	-	-	-	-	-	-	-	-	-	-	-	-	-	-	-	18.6	9.6	8.9	47.8	-	6.4	8.7		
11	51.6	-	-	-	-	-	-	-	-	-	-	-	-	-	-	-	-	-	-	-	9.0	16.5	51.6	6.3	-	7.4	9.3		
12	57.0	-	-	-	-	-	-	-	-	-	-	-	-	-	-	-	-	-	-	-	57.0	7.7	8.6	15.4	-	5.9	5.4		
13	22.6	-	-	-	-	-	-	-	-	-	-	-	-	-	-	-	-	-	-	-	6.0	22.6	32.6	13.0	-	12.6	13.1		
14	44.2	-	-	-	-	-	-	-	-	-	-	-	-	-	-	-	-	-	-	-	44.2	15.5	7.6	13.2	-	6.9	12.6		
15	19.8	-	-	-	-	-	-	-	-	-	-	-	-	-	-	-	-	-	-	-	10.9	9.8	19.8	11.2	-	20.4	27.9		
16	23.7	-	-	-	-	-	-	-	-	-	-	-	-	-	-	-	-	-	-	-	25.2	23.7	10.4	10.7	-	7.3	22.7		
17	17.5	-	-	-	-	-	-	-	-	-	-	-	-	-	-	-	-	-	-	-	19.9	15.9	13.9	17.5	-	17.2	15.6		
18	25.7	-	-	-	-	-	-	-	-	-	-	-	-	-	-	-	-	-	-	-	25.7	13.2	18.2	19.7	-	10.2	12.9		
19	33.4	-	-	-	-	-	-	-	-	-	-	-	-	-	-	-	-	-	-	-	21.8	33.4	9.7	8.5	-	9.5	17.1		
20	19.9	19.9	-	-	-	-	-	-	-	-	-	-	-	-	-	-	-	41.6	-	-	-	-	-	-	-	11.7	26.8		
21	23.2	23.2	-	-	-	-	-	-	-	-	-	-	-	-	-	-	-	23.6	-	-	-	-	-	-	-	11.2	41.9		
22	29.6	-	-	-	-	-	-	-	-	-	-	-	-	-	-	-	-	-	-	-	15.8	7.7	29.6	24.8	-	5.1	17.1		
23	42.2	-	-	-	-	-	-	-	-	-	-	-	-	-	-	-	-	-	-	-	42.2	13.2	11.2	9.5	-	7.2	16.7		
24	22.2	-	-	-	-	-	-	-	-	-	-	-	-	-	-	-	-	-	-	-	11.4	19.6	25.3	22.2	-	7.0	14.5		
25	36.9	-	-	-	-	-	-	-	-	-	-	-	-	-	-	-	-	-	-	-	11.4	17.7	9.4	36.9	-	6.2	18.4		
26	25.3	-	-	-	-	-	-	-	-	-	-	-	-	-	-	-	-	-	-	-	31.0	8.2	13.2	25.3	-	4.7	17.6		
27	39.7	-	-	-	-	-	-	-	-	-	-	-	-	-	-	-	-	-	-	-	8.5	39.7	8.1	27.9	-	5.2	10.5		
28	25.0	-	-	-	-	-	-	-	-	-	-	-	-	-	-	-	-	-	-	-	23.3	25.0	15.0	15.3	-	7.5	13.9		
29	14.1	-	-	-	-	-	-	-	-	-	-	-	-	-	-	-	-	-	-	-	14.8	25.0	14.1	16.6	-	8.3	21.2		
30	10.2	10.2	-	-	-	-	-	-	-	-	-	-	-	-	-	-	-	40.0	-	-	-	-	-	-	-	15.9	33.9		
31	22.8	-	-	-	-	-	-	-	-	-	-	-	-	-	-	-	-	-	-	-	8.9	8.4	22.8	33.5	-	7.1	19.3		
32	15.5	-	-	-	-	-	-	-	-	-	-	-	-	-	-	-	-	-	-	-	43.0	10.4	9.7	15.5	-	9.1	12.3		
33	28.4	-	-	-	-	-	-	-	-	-	-	-	-	-	-	-	-	-	-	-	30.9	7.6	28.4	5.0	-	14.6	13.5		
34	29.2	-	-	-	-	-	-	-	-	-	-	-	-	-	-	-	-	-	-	-	32.2	9.3	10.2	29.2	-	7.8	11.3		
35	15.6	-	-	-	-	-	-	-	-	-	-	-	-	-	-	-	-	-	-	-	14.7	15.6	24.3	14.3	-	17.8	13.3		
36	60.2	-	-	-	-	-	-	-	-	-	-	-	-	-	-	-	-	-	-	-	7.3	9.1	6.7	60.2	-	5.6	11.1		
37	20.2	-	-	-	-	-	-	-	-	-	-	-	-	-	-	-	-	-	-	-	20.2	17.1	9.8	33.8	-	4.7	14.4		
38	44.6	26.4	-	-	14.3	-	-	9.5	-	-	10.9	-	-	-	-	-	-	14.6	-	-	-	-	-	-	-	-	5.9	18.4	
39																													
40																													
41																													
42																													
43																													
44																													
45																													
46																													
47																													
48																													
49																													
50																													

\* Answer Codes % is the percentage of students who obtained that specific answer code. Please see score card for that question for answer code description.

\* Score % is the percentage of students who answered the question correctly.

### WHAT DID YOUR STUDENTS ANSWER?

Test: March 2011

Subject: Maths

\* Answer Codes % is the percentage of students who obtained that specific answer code. Please see score card for that question for answer code description.  
\* Score % is the percentage of students who answered the question correctly.



# Test For Student Learning For Gyan Shala Program

## WHAT DID YOUR STUDENTS ANSWER?

Medium: Gujarati

Group: Control AMC Schools

Class: 3

Test: March 2011

Number of Students: 488

Subject: Language

Question No	Score %	Answer Codes %																											
		01	02	03	11	12	13	21	22	23	31	32	33	81	82	83	84	85	87	89	A	B	C	D	E	86	88		
1	79.5	79.5	-	-	-	-	-	-	-	-	-	-	-	0.2	-	-	-	6.4	-	-	-	-	-	-	-	5.1	8.8		
2	57.8	57.8	-	-	-	-	-	-	-	-	-	-	-	1.4	-	-	-	21.5	-	-	-	-	-	-	-	8.0	11.3		
3	15.4	-	-	-	-	-	-	-	-	-	-	-	-	-	-	-	-	-	-	-	4.3	4.7	15.4	3.1	-	27.3	45.3		
4	43.2	-	-	-	-	-	-	-	-	-	-	-	-	-	-	-	-	-	-	-	8.8	4.5	43.2	14.3	-	18.9	10.2		
5	66.8	-	-	-	-	-	-	-	-	-	-	-	-	-	-	-	-	-	-	-	1.6	3.3	2.3	66.8	-	15.0	11.1		
6	27.5	-	-	-	-	-	-	-	-	-	-	-	-	-	-	-	-	-	-	-	9.8	27.5	11.7	13.5	-	13.9	23.6		
7	24.4	-	-	-	-	-	-	-	-	-	-	-	-	-	-	-	-	-	-	-	24.6	5.7	8.8	24.4	-	12.5	24.0		
8	23.6	-	-	-	-	-	-	-	-	-	-	-	-	-	-	-	-	-	-	-	23.6	8.6	8.8	5.9	-	28.5	24.6		
9	29.3	-	-	-	-	-	-	-	-	-	-	-	-	-	-	-	-	-	-	-	7.0	29.3	13.5	7.4	-	8.0	34.8		
10	72.7	72.7	-	-	-	-	-	-	-	-	-	-	-	-	-	-	-	3.5	-	-	-	-	-	-	-	6.9	16.8		
11	31.1	-	-	-	-	-	-	-	-	-	-	-	-	-	-	-	-	-	-	-	10.2	31.1	5.5	5.9	-	17.4	29.7		
12	43.0	-	-	-	-	-	-	-	-	-	-	-	-	-	-	-	-	-	-	-	9.6	5.3	9.8	43.0	-	14.3	17.8		
13	28.7	-	-	-	-	-	-	-	-	-	-	-	-	-	-	-	-	-	-	-	28.7	3.7	11.7	17.8	-	16.0	22.1		
14	43.2	-	-	-	-	-	-	-	-	-	-	-	-	-	-	-	-	-	-	-	9.2	5.9	43.2	5.5	-	14.5	21.5		
15	21.3	-	-	-	-	-	-	-	-	-	-	-	-	-	-	-	-	-	-	-	15.8	12.5	21.3	6.4	-	8.8	35.2		
16	35.7	28.3	-	-	-	-	-	9.4	-	-	10.7	-	-	-	-	-	-	12.3	-	-	-	-	-	-	-	10.2	29.1		
17	32.2	-	-	-	-	-	-	-	-	-	-	-	-	-	-	-	-	-	-	-	32.2	14.5	2.9	2.3	-	7.4	40.8		
18	14.8	-	-	-	-	-	-	-	-	-	-	-	-	-	-	-	-	-	-	-	13.1	14.8	4.7	16.4	-	9.4	41.6		
19	16.0	-	-	-	-	-	-	-	-	-	-	-	-	-	-	-	-	-	-	-	16.0	11.3	9.6	6.8	-	9.0	47.3		
20	6.1	-	-	-	-	-	-	-	-	-	-	-	-	-	-	-	-	-	-	-	10.2	6.8	6.1	30.9	-	6.1	39.8		
21	17.6	-	-	-	-	-	-	-	-	-	-	-	-	-	-	-	-	-	-	-	4.5	17.6	10.0	15.6	-	5.1	47.1		
22	6.7	5.9	-	-	-	-	-	1.4	-	-	-	-	-	-	-	-	-	13.3	-	-	-	-	-	-	-	14.8	64.5		
23	12.3	-	-	-	-	-	-	-	-	-	-	-	-	-	-	-	-	-	-	-	12.3	11.9	7.4	8.2	-	18.0	42.2		
24	9.0	-	-	-	-	-	-	-	-	-	-	-	-	-	-	-	-	-	-	-	11.7	5.5	22.1	9.0	-	7.8	43.9		
25	12.3	-	-	-	-	-	-	-	-	-	-	-	-	-	-	-	-	-	-	-	10.5	10.9	12.3	13.7	-	6.1	46.5		
26	6.6	-	-	-	-	-	-	-	-	-	-	-	-	-	-	-	-	-	-	-	18.9	14.5	6.6	7.0	-	5.9	47.1		
27	22.7	-	-	-	-	-	-	-	-	-	-	-	-	-	-	-	-	-	-	-	8.4	9.2	6.6	22.7	-	13.7	39.3		
28	14.3	-	-	-	-	-	-	-	-	-	-	-	-	-	-	-	-	-	-	-	10.0	9.4	13.3	14.3	-	7.6	45.3		
29	15.0	-	-	-	-	-	-	-	-	-	-	-	-	-	-	-	-	-	-	-	10.5	11.1	15.0	9.8	-	5.1	48.6		
30	19.1	-	-	-	-	-	-	-	-	-	-	-	-	-	-	-	-	-	-	-	9.4	19.1	10.0	5.9	-	5.1	50.4		
31	19.3	-	-	-	-	-	-	-	-	-	-	-	-	-	-	-	-	-	-	-	6.6	9.4	8.6	19.3	-	11.9	44.3		
32	15.8	-	-	-	-	-	-	-	-	-	-	-	-	-	-	-	-	-	-	-	8.6	15.8	7.6	10.5	-	11.7	45.9		
33																													
34																													
35																													
36																													
37																													
38																													
39																													
40																													
41																													
42																													
43																													
44																													
45																													
46																													
47																													
48																													
49																													
50																													

\* Answer Codes % is the percentage of students who obtained that specific answer code. Please see score card for that question for answer code description.

\* Score % is the percentage of students who answered the question correctly.

### WHAT DID YOUR STUDENTS ANSWER?

Test: March 2011

Subject: Maths

\* Answer Codes % is the percentage of students who obtained that specific answer code. Please see score card for that question for answer code description.  
\* Score % is the percentage of students who answered the question correctly.

# Test For Student Learning For Gyan Shala Program

## WHAT DID YOUR STUDENTS ANSWER?

Medium: Gujarati

Group: Control AMC Schools

Class: 5

Test: March 2011

Number of Students: 606

Subject: Language

Question No	Score %	Answer Codes %																											
		01	02	03	11	12	13	21	22	23	31	32	33	81	82	83	84	85	87	89	A	B	C	D	E	86	88		
1	62.7	-	-	-	-	-	-	-	-	-	-	-	-	-	-	-	-	-	-	-	7.1	62.7	2.5	1.7	-	12.0	11.6		
2	39.9	-	-	-	-	-	-	-	-	-	-	-	-	-	-	-	-	-	-	-	39.9	17.2	9.9	8.1	-	15.7	6.8		
3	17.0	-	-	-	-	-	-	-	-	-	-	-	-	-	-	-	-	-	-	-	11.1	8.6	17.0	6.4	-	20.0	34.5		
4	77.7	-	-	-	-	-	-	-	-	-	-	-	-	-	-	-	-	-	-	-	77.7	0.8	2.3	0.2	-	6.6	9.9		
5	62.7	58.4	4.3	-	-	-	-	-	-	-	-	-	-	-	-	-	-	12.7	-	-	-	-	-	-	-	6.5	15.7		
6	52.0	-	-	-	-	-	-	-	-	-	-	-	-	-	-	-	-	-	-	-	12.0	6.8	52.0	9.2	-	7.8	9.7		
7	38.3	-	-	-	-	-	-	-	-	-	-	-	-	-	-	-	-	-	-	-	17.2	18.0	38.3	5.0	-	7.1	12.0		
8	37.5	-	-	-	-	-	-	-	-	-	-	-	-	-	-	-	-	-	-	-	11.6	15.2	37.5	5.3	-	15.7	12.4		
9	30.2	-	-	-	-	-	-	-	-	-	-	-	-	-	-	-	-	-	-	-	30.2	21.3	8.7	16.3	-	8.3	12.7		
10	46.2	-	-	-	-	-	-	-	-	-	-	-	-	-	-	-	-	-	-	-	8.1	13.2	9.7	46.2	-	5.9	14.4		
11	47.2	-	-	-	-	-	-	-	-	-	-	-	-	-	-	-	-	-	-	-	4.6	16.0	47.2	6.8	-	7.8	15.2		
12	49.3	-	-	-	-	-	-	-	-	-	-	-	-	-	-	-	-	-	-	-	49.3	7.3	15.5	8.9	-	7.1	9.4		
13	22.9	-	-	-	-	-	-	-	-	-	-	-	-	-	-	-	-	-	-	-	5.8	22.9	25.2	12.9	-	9.9	20.8		
14	36.8	-	-	-	-	-	-	-	-	-	-	-	-	-	-	-	-	-	-	-	36.8	11.2	9.4	10.1	-	7.6	22.4		
15	17.2	-	-	-	-	-	-	-	-	-	-	-	-	-	-	-	-	-	-	-	13.0	10.7	17.2	4.6	-	18.2	33.8		
16	26.9	-	-	-	-	-	-	-	-	-	-	-	-	-	-	-	-	-	-	-	17.8	26.9	8.4	6.1	-	8.4	29.9		
17	19.3	-	-	-	-	-	-	-	-	-	-	-	-	-	-	-	-	-	-	-	19.0	8.3	10.1	19.3	-	14.2	26.7		
18	22.1	-	-	-	-	-	-	-	-	-	-	-	-	-	-	-	-	-	-	-	22.1	12.5	16.5	11.4	-	9.6	25.4		
19	29.0	-	-	-	-	-	-	-	-	-	-	-	-	-	-	-	-	-	-	-	18.0	29.0	8.3	8.7	-	6.9	26.6		
20	13.2	13.2	-	-	-	-	-	-	-	-	-	-	-	-	-	-	-	25.7	-	-	-	-	-	-	-	12.9	45.7		
21	17.2	17.2	-	-	-	-	-	-	-	-	-	-	-	-	-	-	-	13.2	-	-	-	-	-	-	-	9.1	58.1		
22	22.8	-	-	-	-	-	-	-	-	-	-	-	-	-	-	-	-	-	-	-	14.0	5.6	22.8	20.8	-	5.9	28.4		
23	36.6	-	-	-	-	-	-	-	-	-	-	-	-	-	-	-	-	-	-	-	36.6	10.2	7.8	11.7	-	5.1	26.1		
24	21.9	-	-	-	-	-	-	-	-	-	-	-	-	-	-	-	-	-	-	-	8.4	17.2	18.6	21.9	-	5.6	25.7		
25	32.8	-	-	-	-	-	-	-	-	-	-	-	-	-	-	-	-	-	-	-	9.9	12.7	9.4	32.8	-	4.8	27.9		
26	23.3	-	-	-	-	-	-	-	-	-	-	-	-	-	-	-	-	-	-	-	21.8	8.1	10.6	23.3	-	6.4	27.4		
27	35.1	-	-	-	-	-	-	-	-	-	-	-	-	-	-	-	-	-	-	-	6.6	35.1	8.9	16.2	-	6.3	24.4		
28	16.8	-	-	-	-	-	-	-	-	-	-	-	-	-	-	-	-	-	-	-	23.6	16.8	11.2	13.7	-	6.9	25.2		
29	10.7	-	-	-	-	-	-	-	-	-	-	-	-	-	-	-	-	-	-	-	13.7	15.2	10.7	12.7	-	7.9	37.3		
30	8.1	8.1	-	-	-	-	-	-	-	-	-	-	-	-	-	-	-	21.5	-	-	-	-	-	-	-	11.7	56.3		
31	14.9	-	-	-	-	-	-	-	-	-	-	-	-	-	-	-	-	-	-	-	11.2	9.9	14.9	22.3	-	5.9	33.3		
32	11.7	-	-	-	-	-	-	-	-	-	-	-	-	-	-	-	-	-	-	-	32.2	10.4	6.9	11.7	-	6.9	29.4		
33	22.4	-	-	-	-	-	-	-	-	-	-	-	-	-	-	-	-	-	-	-	20.5	8.7	22.4	7.3	-	9.6	29.0		
34	23.3	-	-	-	-	-	-	-	-	-	-	-	-	-	-	-	-	-	-	-	20.0	5.6	14.5	23.3	-	8.4	25.7		
35	7.6	-	-	-	-	-	-	-	-	-	-	-	-	-	-	-	-	-	-	-	13.7	7.6	17.8	15.5	-	12.2	30.7		
36	42.6	-	-	-	-	-	-	-	-	-	-	-	-	-	-	-	-	-	-	-	5.8	7.4	6.3	42.6	-	7.1	28.4		
37	12.9	-	-	-	-	-	-	-	-	-	-	-	-	-	-	-	-	-	-	-	12.9	11.9	8.7	28.1	-	5.9	30.0		
38	28.7	16.8	-	-	6.3	-	-	9.1	-	-	10.6	-	-	-	-	-	-	10.9	-	-	-	-	-	-	-	6.5	37.3		
39																													
40																													
41																													
42																													
43																													
44																													
45																													
46																													
47																													
48																													
49																													
50																													

\* Answer Codes % is the percentage of students who obtained that specific answer code. Please see score card for that question for answer code description.

\* Score % is the percentage of students who answered the question correctly.

### WHAT DID YOUR STUDENTS ANSWER?

Test: March 2011

Subject: Maths

\* Answer Codes % is the percentage of students who obtained that specific answer code. Please see score card for that question for answer code description.  
\* Score % is the percentage of students who answered the question correctly.

# Test For Student Learning For Gyan Shala Program

## WHAT ARE THE SCORES OF THE SCHOOLS TESTED?

Group: Gyan Shala Schools

Test : March 2011

Sr No	School Code	School Name	City	Medium	Class	Language			Maths		
						N	%	SD	N	%	SD
1	AM001	Bhagyesanagar	Ahmedabad	Gujarati	3	22	67.2	12.7	21	71.6	11.4
					5	0	0.0	0.0	0	0.0	0.0
2	AM002	Rabiya bibi	Ahmedabad	Gujarati	3	25	58.5	11.6	25	71.1	10.0
					5	0	0.0	0.0	0	0.0	0.0
3	AM003	Jakshir Rabari	Ahmedabad	Gujarati	3	12	62.0	11.7	12	81.8	5.2
					5	0	0.0	0.0	0	0.0	0.0
4	AM004	New Bhavani-1	Ahmedabad	Gujarati	3	39	69.7	11.4	39	76.3	8.8
					5	0	0.0	0.0	0	0.0	0.0
5	AM004	New Bhavani-2	Ahmedabad	Gujarati	3	39	69.7	11.4	39	76.3	8.8
					5	0	0.0	0.0	0	0.0	0.0
6	AM005	Udaynagar (Savgan nagar)	Ahmedabad	Gujarati	3	18	76.4	5.0	18	91.9	3.4
					5	0	0.0	0.0	0	0.0	0.0
7	AM006	Talavdi na chapra	Ahmedabad	Gujarati	3	14	60.3	18.6	14	76.9	15.8
					5	0	0.0	0.0	0	0.0	0.0
8	AM007	Munsipura 1- 2	Ahmedabad	Gujarati	3	16	67.8	9.8	16	79.8	9.1
					5	0	0.0	0.0	0	0.0	0.0
9	AM009	Jagdishpura	Ahmedabad	Gujarati	3	12	63.3	8.1	12	81.4	6.3
					5	0	0.0	0.0	0	0.0	0.0
10	AM010	Hathijan Bhatthagam	Ahmedabad	Gujarati	3	13	48.1	11.7	13	62.1	12.1
					5	0	0.0	0.0	0	0.0	0.0
11	AM011	Mukeshnagar	Ahmedabad	Gujarati	3	17	64.3	8.1	17	73.3	6.4
					5	0	0.0	0.0	0	0.0	0.0
12	AM012	Rabari Vasahat	Ahmedabad	Gujarati	3	24	68.1	15.1	24	82.1	5.4
					5	0	0.0	0.0	0	0.0	0.0
13	AM013	Patannagar-1	Ahmedabad	Gujarati	3	21	72.2	11.2	19	74.9	11.0
					5	0	0.0	0.0	0	0.0	0.0
14	AM015	Patannagar-2	Ahmedabad	Gujarati	3	20	57.7	13.0	21	53.3	7.8
					5	0	0.0	0.0	0	0.0	0.0
15	AM016	Shiv Shaktinagar	Ahmedabad	Gujarati	3	19	82.4	7.0	18	78.2	6.0
					5	0	0.0	0.0	0	0.0	0.0
16	BM018	Alasna	Ahmedabad	Gujarati	3	22	51.2	13.2	22	56.6	16.3
					5	0	0.0	0.0	0	0.0	0.0
17	BM020	Utvadi	Ahmedabad	Gujarati	3	36	71.0	9.9	36	81.3	10.9
					5	0	0.0	0.0	0	0.0	0.0
18	BM020	Utvadi Noon	Ahmedabad	Gujarati	3	36	71.0	9.9	36	81.3	10.9
					5	0	0.0	0.0	0	0.0	0.0
19	BM021	Allahnagar- 2	Ahmedabad	Gujarati	3	19	58.2	11.7	19	63.2	14.7
					5	0	0.0	0.0	0	0.0	0.0
20	BM022	Santoshnagar - 1/2	Ahmedabad	Gujarati	3	23	62.4	8.4	23	55.3	13.3
					5	0	0.0	0.0	0	0.0	0.0
21	BM023	Sanjar - 1	Ahmedabad	Gujarati	3	23	41.1	9.8	23	59.0	14.5
					5	0	0.0	0.0	0	0.0	0.0
22	BM024	Sanjar - 2	Ahmedabad	Gujarati	3	23	48.9	12.9	22	56.1	14.4
					5	0	0.0	0.0	0	0.0	0.0
23	BM025	Nabinagar	Ahmedabad	Gujarati	3	21	51.5	11.0	21	60.1	11.7
					5	0	0.0	0.0	0	0.0	0.0
24	BM026	Naroda Patiya-1	Ahmedabad	Gujarati	3	18	75.5	9.5	18	88.3	4.7
					5	0	0.0	0.0	0	0.0	0.0
25	BM028	Navabnagar	Ahmedabad	Gujarati	3	14	88.5	4.7	14	74.5	7.6
					5	0	0.0	0.0	0	0.0	0.0
26	BM029	Khodiyarnagar-1	Ahmedabad	Gujarati	3	24	50.5	9.8	24	85.6	5.8
					5	0	0.0	0.0	0	0.0	0.0

\* N is the number of students tested; % is the average score achieved by students in the paper expressed as a percentage; The Standard Deviation (SD)

# Test For Student Learning For Gyan Shala Program

## WHAT ARE THE SCORES OF THE SCHOOLS TESTED?

Group: Gyan Shala Schools

Test : March 2011

Sr No	School Code	School Name	City	Medium	Class	Language			Maths		
						N	%	SD	N	%	SD
27	BM030	Khodiyarnagar-2	Ahmedabad	Gujarati	3	20	78.4	11.5	20	85.4	13.2
					5	0	0.0	0.0	0	0.0	0.0
28	BM031	Chamundanagar	Ahmedabad	Gujarati	3	22	81.3	4.8	22	90.6	2.5
					5	0	0.0	0.0	0	0.0	0.0
29	BM031	Chamundanagar-2	Ahmedabad	Gujarati	3	22	81.3	4.8	22	90.6	2.5
					5	0	0.0	0.0	0	0.0	0.0
30	BM032	Mohan Darji ni Chali	Ahmedabad	Gujarati	3	20	43.1	14.2	20	52.5	18.2
					5	0	0.0	0.0	0	0.0	0.0
31	BM033	Nagmanagar	Ahmedabad	Gujarati	3	13	47.1	15.7	13	66.0	17.4
					5	0	0.0	0.0	0	0.0	0.0
32	BM035	Ramgali Bhilvas	Ahmedabad	Gujarati	3	15	65.9	5.5	15	73.6	12.6
					5	0	0.0	0.0	0	0.0	0.0
33	BM036	Saiyadvadi - 1	Ahmedabad	Gujarati	3	20	69.6	12.3	19	62.1	13.9
					5	0	0.0	0.0	0	0.0	0.0
34	BM037	Saiyadvadi - 2	Ahmedabad	Gujarati	3	23	47.1	11.7	23	65.9	12.8
					5	0	0.0	0.0	0	0.0	0.0
35	CH040	Bapalal Ghanchi	Ahmedabad	Gujarati	3	20	71.0	10.0	19	83.2	14.3
					5	0	0.0	0.0	0	0.0	0.0
36	CH041	Mohanni Chali	Ahmedabad	Gujarati	3	21	57.4	11.5	21	67.6	11.4
					5	0	0.0	0.0	0	0.0	0.0
37	CH042	Patravadi Chali	Ahmedabad	Gujarati	3	11	53.1	11.2	11	77.6	5.9
					5	0	0.0	0.0	0	0.0	0.0
38	CH043	Narmadani Chali	Ahmedabad	Gujarati	3	15	43.8	13.5	15	50.8	8.7
					5	0	0.0	0.0	0	0.0	0.0
39	CH044	Patni Sanjognagar	Ahmedabad	Gujarati	3	14	68.0	10.0	14	89.3	3.9
					5	0	0.0	0.0	0	0.0	0.0
40	CH045	Jay Yogeshvar	Ahmedabad	Gujarati	3	15	53.8	15.1	16	64.4	10.4
					5	0	0.0	0.0	0	0.0	0.0
41	CH046	Mahakali nagar	Ahmedabad	Gujarati	3	19	77.6	10.6	19	71.9	16.5
					5	0	0.0	0.0	0	0.0	0.0
42	CH047	Ratna Popatni Chali	Ahmedabad	Gujarati	3	14	69.4	8.9	14	84.1	10.1
					5	0	0.0	0.0	0	0.0	0.0
43	CH048	Panditnagar-1	Ahmedabad	Gujarati	3	13	44.5	8.2	13	56.8	9.2
					5	0	0.0	0.0	0	0.0	0.0
44	CH049	Panditnagar - 2	Ahmedabad	Gujarati	3	15	51.0	10.1	15	57.2	16.1
					5	0	0.0	0.0	0	0.0	0.0
45	CH050	Safedni Chali	Ahmedabad	Gujarati	3	21	52.6	10.8	21	56.2	13.1
					5	0	0.0	0.0	0	0.0	0.0
46	CH051	Potaliya	Ahmedabad	Gujarati	3	19	58.2	10.7	20	75.8	5.3
					5	0	0.0	0.0	0	0.0	0.0
47	CH052	Sulemanni Chali Baijivi	Ahmedabad	Gujarati	3	16	53.4	11.1	16	72.1	17.8
					5	0	0.0	0.0	0	0.0	0.0
48	CH053	Patel mill	Ahmedabad	Gujarati	3	22	50.7	12.3	20	61.9	13.0
					5	0	0.0	0.0	0	0.0	0.0
49	CH054	Judge Sahebni Chali	Ahmedabad	Gujarati	3	22	52.4	15.7	22	59.1	19.0
					5	0	0.0	0.0	0	0.0	0.0
50	CH055	Shanti Sagar Trikamlal	Ahmedabad	Gujarati	3	19	72.2	6.4	19	63.4	11.6
					5	0	0.0	0.0	0	0.0	0.0
51	VD056	Rabari Vasahat	Ahmedabad	Gujarati	3	22	60.7	11.5	22	64.5	10.7
					5	0	0.0	0.0	0	0.0	0.0
52	VD057	Manav Sadhana 1	Ahmedabad	Gujarati	3	35	63.6	10.3	36	66.0	13.5
					5	0	0.0	0.0	0	0.0	0.0

\* N is the number of students tested; % is the average score achieved by students in the paper expressed as a percentage; The Standard Deviation (SD)

# Test For Student Learning For Gyan Shala Program

## WHAT ARE THE SCORES OF THE SCHOOLS TESTED?

Group: Gyan Shala Schools

Test : March 2011

Sr No	School Code	School Name	City	Medium	Class	Language			Maths		
						N	%	SD	N	%	SD
53	VD057	Manav Sadhana	Ahmedabad	Gujarati	3	35	63.6	10.3	36	66.0	13.5
					5	0	0.0	0.0	0	0.0	0.0
54	VD058	Parikshitnagar - 1/2	Ahmedabad	Gujarati	3	13	85.2	6.6	13	89.7	9.7
					5	0	0.0	0.0	0	0.0	0.0
55	VD059	Ramapirno Tekro	Ahmedabad	Gujarati	3	20	60.7	9.5	20	76.2	11.8
					5	0	0.0	0.0	0	0.0	0.0
56	VD060	Sanjaynagar	Ahmedabad	Gujarati	3	16	69.2	14.1	16	80.8	5.1
					5	0	0.0	0.0	0	0.0	0.0
57	VD061	Gandhivas - 2	Ahmedabad	Gujarati	3	16	58.2	11.9	16	73.6	4.3
					5	0	0.0	0.0	0	0.0	0.0
58	VD062	Tapovan	Ahmedabad	Gujarati	3	11	43.5	13.6	11	56.0	15.3
					5	0	0.0	0.0	0	0.0	0.0
59	VD063	Satkeval	Ahmedabad	Gujarati	3	19	51.5	8.3	19	65.2	12.5
					5	0	0.0	0.0	0	0.0	0.0
60	VD064	Bhamariyovas	Ahmedabad	Gujarati	3	10	54.7	13.5	10	66.5	8.3
					5	0	0.0	0.0	0	0.0	0.0
61	VD065	Kabutarkhana	Ahmedabad	Gujarati	3	13	63.4	7.7	13	77.2	9.1
					5	0	0.0	0.0	0	0.0	0.0
62	VS066	Someshvarnagar	Ahmedabad	Gujarati	3	26	79.1	5.2	26	87.4	5.0
					5	0	0.0	0.0	0	0.0	0.0
63	VS067	Savansi(morning)	Ahmedabad	Gujarati	3	30	61.6	13.2	30	65.8	18.8
					5	0	0.0	0.0	0	0.0	0.0
64	VS067	Savansi(noon)	Ahmedabad	Gujarati	3	30	61.6	13.2	30	65.8	18.8
					5	0	0.0	0.0	0	0.0	0.0
65	VS068	Soraynagar	Ahmedabad	Gujarati	3	25	78.0	8.2	25	85.4	10.4
					5	0	0.0	0.0	0	0.0	0.0
66	VS069	Yogeshvarnagar - 1	Ahmedabad	Gujarati	3	17	62.3	7.4	17	68.5	13.4
					5	0	0.0	0.0	0	0.0	0.0
67	VS070	Yogeshvarnagar - 2	Ahmedabad	Gujarati	3	20	54.2	9.9	20	70.0	12.6
					5	0	0.0	0.0	0	0.0	0.0
68	VS071	Pravinnagar-1	Ahmedabad	Gujarati	3	21	57.3	13.4	21	59.3	9.2
					5	0	0.0	0.0	0	0.0	0.0
69	VS072	Pravinnagar - 2	Ahmedabad	Gujarati	3	20	48.4	15.2	20	50.4	12.7
					5	0	0.0	0.0	0	0.0	0.0
70	VS073	Guptanagar -1	Ahmedabad	Gujarati	3	24	58.1	14.9	24	59.6	16.0
					5	0	0.0	0.0	0	0.0	0.0
71	VS075	J Ward	Ahmedabad	Gujarati	3	21	57.2	11.4	21	70.7	10.6
					5	0	0.0	0.0	0	0.0	0.0
72	VS076	G Ward / E Ward	Ahmedabad	Gujarati	3	21	53.6	10.1	21	58.1	14.1
					5	0	0.0	0.0	0	0.0	0.0
73	VS077	Rahilpark	Ahmedabad	Gujarati	3	17	54.7	8.1	18	62.2	18.4
					5	0	0.0	0.0	0	0.0	0.0
74	VS078	Husenipark - 1	Ahmedabad	Gujarati	3	27	57.1	13.3	27	56.7	14.1
					5	0	0.0	0.0	0	0.0	0.0
75	VS079	Husenipark - 2	Ahmedabad	Gujarati	3	18	61.8	14.8	18	56.8	13.4
					5	0	0.0	0.0	0	0.0	0.0
76	VS080	Lalbaug - 1	Ahmedabad	Gujarati	3	23	56.1	11.0	23	72.1	12.1
					5	0	0.0	0.0	0	0.0	0.0
77	VS081	Lalbaug - 2	Ahmedabad	Gujarati	3	21	56.0	11.8	21	67.8	11.8
					5	0	0.0	0.0	0	0.0	0.0
78	VS082	Makkanagar	Ahmedabad	Gujarati	3	18	73.2	4.0	18	75.0	17.0
					5	0	0.0	0.0	0	0.0	0.0

\* N is the number of students tested; % is the average score achieved by students in the paper expressed as a percentage; The Standard Deviation (SD)



# Test For Student Learning For Gyan Shala Program

## WHAT ARE THE SCORES OF THE SCHOOLS TESTED?

Group: Gyan Shala Schools

Test : March 2011

Sr No	School Code	School Name	City	Medium	Class	Language			Maths		
						N	%	SD	N	%	SD
79	VS084	Bhilvas	Ahmedabad	Gujarati	3	16	78.7	5.2	16	88.5	4.3
					5	0	0.0	0.0	0	0.0	0.0
80	VS085	Rajivnagar 6	Ahmedabad	Gujarati	3	17	66.3	10.6	17	74.4	10.5
					5	0	0.0	0.0	0	0.0	0.0
81	VS086	Rajivnagar -2	Ahmedabad	Gujarati	3	21	51.9	10.2	21	64.5	16.9
					5	0	0.0	0.0	0	0.0	0.0
82	VS087	Ramdevnagar	Ahmedabad	Gujarati	3	24	46.9	11.6	24	56.7	16.9
					5	0	0.0	0.0	0	0.0	0.0
83	VD088	Sant Rohidasnagar	Ahmedabad	Gujarati	3	18	47.3	14.3	18	53.4	17.2
					5	0	0.0	0.0	0	0.0	0.0
84	BM089	Millatnagar	Ahmedabad	Gujarati	3	14	69.6	6.9	14	90.7	4.0
					5	0	0.0	0.0	0	0.0	0.0
85	BM092	Allahnagar-1	Ahmedabad	Gujarati	3	22	36.4	14.2	22	51.1	18.8
					5	0	0.0	0.0	0	0.0	0.0
86	VS093	Ranujanagar	Ahmedabad	Gujarati	3	19	56.2	9.8	19	64.4	17.9
					5	0	0.0	0.0	0	0.0	0.0
87	BM096	Madaninagar	Ahmedabad	Gujarati	3	16	56.2	4.8	16	64.4	14.9
					5	0	0.0	0.0	0	0.0	0.0
88	VD097	Jitudani chali	Ahmedabad	Gujarati	3	17	53.9	12.5	17	72.6	13.8
					5	0	0.0	0.0	0	0.0	0.0
89	AM098	Ganesh Tekari	Ahmedabad	Gujarati	3	14	65.6	9.9	14	72.2	8.7
					5	0	0.0	0.0	0	0.0	0.0
90	AM099	Kadiani chali	Ahmedabad	Gujarati	3	15	55.9	10.3	15	51.3	12.1
					5	0	0.0	0.0	0	0.0	0.0
91	AM100	Bhikhadevano Vado	Ahmedabad	Gujarati	3	17	55.5	12.5	17	68.3	16.0
					5	0	0.0	0.0	0	0.0	0.0
92	AM101	Bhagvatinagar	Ahmedabad	Gujarati	3	20	64.2	12.6	20	71.7	13.2
					5	0	0.0	0.0	0	0.0	0.0
93	AM102	Alifnagar	Ahmedabad	Gujarati	3	30	67.5	14.7	30	78.5	13.1
					5	0	0.0	0.0	0	0.0	0.0
94	AM103	Ajiznagar	Ahmedabad	Gujarati	3	20	49.3	9.3	20	66.9	18.5
					5	0	0.0	0.0	0	0.0	0.0
95	AM104	Chistiyapark	Ahmedabad	Gujarati	3	19	44.6	16.0	19	53.9	16.4
					5	0	0.0	0.0	0	0.0	0.0
96	AM105	Shama Row-House	Ahmedabad	Gujarati	3	14	76.6	6.8	15	89.5	7.1
					5	0	0.0	0.0	0	0.0	0.0
97	BM106	Khvajanagar	Ahmedabad	Gujarati	3	22	42.2	9.1	22	54.9	12.8
					5	0	0.0	0.0	0	0.0	0.0
98	BM107	Saiyadnagar	Ahmedabad	Gujarati	3	16	49.2	10.9	16	80.3	14.9
					5	0	0.0	0.0	0	0.0	0.0
99	BM108	Ganeshnagar Piplajroad	Ahmedabad	Gujarati	3	11	72.5	6.2	10	87.3	4.2
					5	0	0.0	0.0	0	0.0	0.0
100	MG109	Subhashnagar	Ahmedabad	Gujarati	3	11	49.7	18.9	11	54.6	15.5
					5	0	0.0	0.0	0	0.0	0.0
101	MG110	Chamundanagar	Ahmedabad	Gujarati	3	14	55.9	10.6	14	62.6	10.1
					5	0	0.0	0.0	0	0.0	0.0
102	MG111	Baliyadevnagar	Ahmedabad	Gujarati	3	14	61.7	15.4	14	71.4	10.0
					5	0	0.0	0.0	0	0.0	0.0
103	MG112	Indiranagar 1	Ahmedabad	Gujarati	3	28	75.3	8.9	28	68.5	12.7
					5	0	0.0	0.0	0	0.0	0.0
104	VD113	Indiranagar	Ahmedabad	Gujarati	3	17	76.2	9.8	18	77.6	6.9
					5	0	0.0	0.0	0	0.0	0.0

\* N is the number of students tested; % is the average score achieved by students in the paper expressed as a percentage; The Standard Deviation (SD)

## Test For Student Learning For Gyan Shala Program

### WHAT ARE THE SCORES OF THE SCHOOLS TESTED?

Group: Gyan Shala Schools

Test : March 2011

Sr No	School Code	School Name	City	Medium	Class	Language			Maths		
						N	%	SD	N	%	SD
105	VD114	Tarvali Chali	Ahmedabad	Gujarati	3	21	61.0	14.1	21	77.1	11.5
					5	0	0.0	0.0	0	0.0	0.0
106	NB4	New Bhavani-1	Ahmedabad	Gujarati	3	0	0.0	0.0	0	0.0	0.0
					5	32	59.6	15.7	32	54.3	20.4
107	NB04	New Bhavani-2	Ahmedabad	Gujarati	3	0	0.0	0.0	0	0.0	0.0
					5	17	66.2	13.3	19	67.6	14.2
108	SW4	Someswar-Sawansi Nagar-1	Ahmedabad	Gujarati	3	0	0.0	0.0	0	0.0	0.0
					5	21	60.3	9.4	20	43.7	13.4
109	SW04	Someswar-Sawansi Nagar-2	Ahmedabad	Gujarati	3	0	0.0	0.0	0	0.0	0.0
					5	23	56.4	10.0	22	56.0	16.5
110	BN4	Bhagyesh Nagar	Ahmedabad	Gujarati	3	0	0.0	0.0	0	0.0	0.0
					5	23	67.6	10.4	23	73.8	13.7
111	PN4	Pravin Nagar	Ahmedabad	Gujarati	3	0	0.0	0.0	0	0.0	0.0
					5	37	62.4	13.0	38	51.9	16.0
112	YN4	Yogeshwar Nagar	Ahmedabad	Gujarati	3	0	0.0	0.0	0	0.0	0.0
					5	31	50.4	12.2	27	42.5	16.6
113	TC4	Talavadi na chapra	Ahmedabad	Gujarati	3	0	0.0	0.0	0	0.0	0.0
					5	17	64.0	9.2	17	60.9	17.2

\* N is the number of students tested; % is the average score achieved by students in the paper expressed as a percentage; The Standard Deviation (SD)

# Test For Student Learning For Gyan Shala Program

## WHAT ARE THE SCORES OF THE SCHOOLS TESTED?

Group: Treatment AMC Schools

Test : March 2011

Sr No	School Code	School Name	City	Medium	Class	Language			Maths		
						N	%	SD	N	%	SD
1	AS09	Asarva no.9	Ahmedabad	Gujarati	3	0	0.0	0.0	0	0.0	0.0
					5	88	20.3	14.4	92	14.3	12.9
2	AS10	Asarva no.10	Ahmedabad	Gujarati	3	59	50.4	14.5	59	50.3	14.2
					5	0	0.0	0.0	0	0.0	0.0
3	BN01	Bapunagar no.1	Ahmedabad	Gujarati	3	0	0.0	0.0	0	0.0	0.0
					5	73	44.3	17.4	72	35.1	12.1
4	BN02	Bapunagar no.2	Ahmedabad	Gujarati	3	27	60.6	9.0	27	48.7	17.9
					5	0	0.0	0.0	0	0.0	0.0
5	BN05	Bapunagar no.5	Ahmedabad	Gujarati	3	0	0.0	0.0	0	0.0	0.0
					5	56	33.6	13.3	57	28.8	9.7
6	BN06	Bapunagar no.6	Ahmedabad	Gujarati	3	40	27.2	10.7	41	47.9	19.4
					5	0	0.0	0.0	0	0.0	0.0
7	BN13	Bapunagar no.13	Ahmedabad	Gujarati	3	0	0.0	0.0	0	0.0	0.0
					5	48	36.1	18.5	48	30.3	10.3
8	BN14	Bapunagar no.14	Ahmedabad	Gujarati	3	39	26.4	22.5	39	23.4	24.8
					5	0	0.0	0.0	0	0.0	0.0
9	BP01	Bardolpura no.1	Ahmedabad	Gujarati	3	0	0.0	0.0	0	0.0	0.0
					5	117	31.4	16.1	117	24.4	11.0
10	BP02	Bardolpura no.2	Ahmedabad	Gujarati	3	61	40.2	16.6	59	57.0	21.4
					5	0	0.0	0.0	0	0.0	0.0
11	DP02	Dariyapur no.2	Ahmedabad	Gujarati	3	14	42.6	12.1	14	72.0	11.8
					5	0	0.0	0.0	0	0.0	0.0
12	DP02	Dariyapur no.2	Ahmedabad	Gujarati	3	14	42.6	12.1	14	72.0	11.8
					5	0	0.0	0.0	0	0.0	0.0
13	DP16	Dariyapur no.16	Ahmedabad	Gujarati	3	31	36.7	12.6	31	49.0	11.2
					5	31	34.5	12.1	31	35.9	8.2
14	EB04	Ellisbridge no.4	Ahmedabad	Gujarati	3	10	13.9	12.7	10	16.5	11.2
					5	13	35.3	13.2	13	28.3	10.2
15	EB06	Ellisbridge no.6	Ahmedabad	Gujarati	3	22	23.4	13.2	22	17.5	10.8
					5	20	45.7	10.4	20	41.0	13.3
16	EB22	Ellisbridge no.22	Ahmedabad	Gujarati	3	8	32.6	8.8	8	26.0	10.7
					5	11	34.4	14.5	11	39.6	9.3
17	EB24	Ellisbridge no.24	Ahmedabad	Gujarati	3	13	26.6	10.2	13	21.0	14.9
					5	15	37.4	11.6	15	25.8	8.2
18	JG02	Jahagirpura no.1	Ahmedabad	Gujarati	3	77	27.2	15.4	70	37.9	21.3
					5	95	35.6	18.2	95	32.0	16.0
19	JG02	Jahagirpura no.2	Ahmedabad	Gujarati	3	77	27.2	15.4	70	37.9	21.3
					5	95	35.6	18.2	95	32.0	16.0
20	JP08	Jamalpur no.7	Ahmedabad	Gujarati	3	55	31.6	15.9	55	28.7	14.6
					5	46	42.6	15.7	28	40.3	15.1
21	JP08	Jamalpur no.8	Ahmedabad	Gujarati	3	55	31.6	15.9	55	28.7	14.6
					5	46	42.6	15.7	28	40.3	15.1
22	KK02	Kakariya no.2	Ahmedabad	Gujarati	3	39	48.4	21.8	39	42.2	18.9
					5	78	41.3	14.4	78	31.5	12.6
23	KK02	Kakariya no.1	Ahmedabad	Gujarati	3	39	48.4	21.8	39	42.2	18.9
					5	78	41.3	14.4	78	31.5	12.6
24	KP02	Kalupur no.2	Ahmedabad	Gujarati	3	47	65.8	15.7	47	50.7	21.1
					5	53	29.3	11.1	53	27.5	8.7
25	KH02	Khokhara no.2	Ahmedabad	Gujarati	3	30	12.1	7.0	30	14.5	15.4
					5	27	35.5	17.6	27	32.3	9.5
26	MN04	Maninagar no.4	Ahmedabad	Gujarati	3	23	30.3	14.4	23	28.3	14.4
					5	17	33.0	16.1	17	29.2	8.9

\* N is the number of students tested; % is the average score achieved by students in the paper expressed as a percentage; The Standard Deviation (SD)

## Test For Student Learning For Gyan Shala Program

### WHAT ARE THE SCORES OF THE SCHOOLS TESTED?

Group: Treatment AMC Schools

Test : March 2011

Sr No	School Code	School Name	City	Medium	Class	Language			Maths		
						N	%	SD	N	%	SD
27	RP01	Rajpur no.1	Ahmedabad	Gujarati	3	0	0.0	0.0	0	0.0	0.0
					5	59	30.1	15.1	59	23.6	11.4
28	RP02	Rajpur no.2	Ahmedabad	Gujarati	3	71	26.8	16.6	69	22.2	17.3
					5	0	0.0	0.0	0	0.0	0.0
29	RP03	Rajpur no.3	Ahmedabad	Gujarati	3	0	0.0	0.0	0	0.0	0.0
					5	73	37.1	14.3	33	28.2	11.1
30	RP04	Rajpur no.4	Ahmedabad	Gujarati	3	51	22.7	16.4	51	24.8	17.8
					5	0	0.0	0.0	0	0.0	0.0
31	SM10	Sabarmati no.10	Ahmedabad	Gujarati	3	20	27.5	9.7	20	37.7	20.2
					5	21	46.4	10.1	21	39.8	8.8
32	SR01	Saraspur no.1	Ahmedabad	Gujarati	3	21	38.2	10.0	21	36.4	14.5
					5	26	31.3	12.0	0	0.0	0.0
33	SB01	Shahibag no.1	Ahmedabad	Gujarati	3	0	0.0	0.0	0	0.0	0.0
					5	78	35.0	14.7	78	30.2	12.4
34	SB02	Shahibag no.2	Ahmedabad	Gujarati	3	82	26.5	13.6	82	33.9	17.1
					5	0	0.0	0.0	0	0.0	0.0

\* N is the number of students tested; % is the average score achieved by students in the paper expressed as a percentage; The Standard Deviation (SD)

# Test For Student Learning For Gyan Shala Program

## WHAT ARE THE SCORES OF THE SCHOOLS TESTED?

Group: Control AMC Schools

Test : March 2011

Sr No	School Code	School Name	City	Medium	Class	Language			Maths		
						N	%	SD	N	%	SD
1	AS04	Asarva no.4	Ahmedabad	Gujarati	3	14	16.8	18.6	15	11.5	18.5
					5	82	25.0	16.3	81	18.4	9.8
2	AS08	Asarva no.8	Ahmedabad	Gujarati	3	24	12.7	16.1	24	15.5	22.2
					5	35	32.5	18.1	35	25.2	13.6
3	DU06	Dudheshvar no.6	Ahmedabad	Gujarati	3	29	29.0	14.8	30	27.1	11.7
					5	43	38.8	17.0	43	29.2	11.9
4	EB10	Elleshbridge no.10	Ahmedabad	Gujarati	3	11	25.0	4.6	11	38.1	10.4
					5	26	40.7	12.8	25	32.9	8.2
5	RP10	Rajpur no. 5	Ahmedabad	Gujarati	3	46	28.7	14.7	47	25.5	13.2
					5	0	0.0	0.0	0	0.0	0.0
6	RP10	Rajpur no.10	Ahmedabad	Gujarati	3	46	28.7	14.7	47	25.5	13.2
					5	0	0.0	0.0	0	0.0	0.0
7	EB12	Ellishbridge no.12	Ahmedabad	Gujarati	3	31	55.1	14.6	31	55.3	22.5
					5	34	21.1	9.6	34	25.0	9.4
8	JP18	Jamalpur no.18	Ahmedabad	Gujarati	3	24	29.9	14.6	24	33.0	16.2
					5	45	29.5	14.2	45	25.8	13.4
9	JP24	Jamalpur no.24	Ahmedabad	Gujarati	3	17	48.4	8.5	17	52.7	13.8
					5	27	17.5	20.5	28	15.4	17.5
10	KK04	Kakariya no.4	Ahmedabad	Gujarati	3	34	33.1	9.9	34	32.1	14.0
					5	29	20.5	7.2	28	21.7	9.4
11	KD12	Khadiya no.12	Ahmedabad	Gujarati	3	8	45.3	11.8	8	49.5	20.2
					5	0	0.0	0.0	0	0.0	0.0
12	KD12	Khadiya no.12	Ahmedabad	Gujarati	3	8	45.3	11.8	8	49.5	20.2
					5	0	0.0	0.0	0	0.0	0.0
13	KH04	Khokhara no.4	Ahmedabad	Gujarati	3	28	32.5	12.3	28	22.8	15.4
					5	27	56.6	18.9	27	28.1	11.1
14	MN06	Maninagar no.6	Ahmedabad	Gujarati	3	20	19.9	13.3	20	19.8	16.2
					5	28	37.1	15.0	28	38.3	13.6
15	RK02	Rakhiyal no.1	Ahmedabad	Gujarati	3	45	15.1	13.1	45	14.9	12.0
					5	81	25.2	17.3	83	19.7	13.9
16	RK02	Rakhiyal no.2	Ahmedabad	Gujarati	3	45	15.1	13.1	45	14.9	12.0
					5	81	25.2	17.3	83	19.7	13.9
17	RY02	Raykhad no.2	Ahmedabad	Gujarati	3	22	16.1	14.9	20	18.9	13.1
					5	26	20.3	12.3	24	18.8	8.9
18	RY06	Raykhad no.6	Ahmedabad	Gujarati	3	20	30.4	14.3	19	22.3	18.1
					5	19	28.1	13.1	19	28.5	7.4
19	RY06	Raykhad no.7	Ahmedabad	Gujarati	3	20	30.4	14.3	19	22.3	18.1
					5	19	28.1	13.1	19	28.5	7.4
20	SM02	Sabarmati no.2	Ahmedabad	Gujarati	3	24	10.8	9.2	24	14.1	12.7
					5	23	35.5	10.3	23	30.0	7.9
21	SP01	Saijpur no.1	Ahmedabad	Gujarati	3	48	36.0	19.3	46	32.0	21.1
					5	25	52.9	15.4	25	54.8	16.5
22	SP01	Saijpur no.2	Ahmedabad	Gujarati	3	48	36.0	19.3	46	32.0	21.1
					5	25	52.9	15.4	25	54.8	16.5
23	SP03	Saijpur no.3	Ahmedabad	Gujarati	3	35	18.7	12.9	35	25.7	18.3
					5	38	16.8	13.0	38	16.0	12.2
24	SP03	Saijpur no.5	Ahmedabad	Gujarati	3	35	18.7	12.9	35	25.7	18.3
					5	38	16.8	13.0	38	16.0	12.2
25	SB04	Shahibag no.3	Ahmedabad	Gujarati	3	8	21.1	7.6	8	25.5	9.0
					5	18	37.4	15.8	17	24.5	7.7
26	SB04	Shahibag no.4	Ahmedabad	Gujarati	3	8	21.1	7.6	8	25.5	9.0
					5	18	37.4	15.8	17	24.5	7.7

\* N is the number of students tested; % is the average score achieved by students in the paper expressed as a percentage; The Standard Deviation (SD)